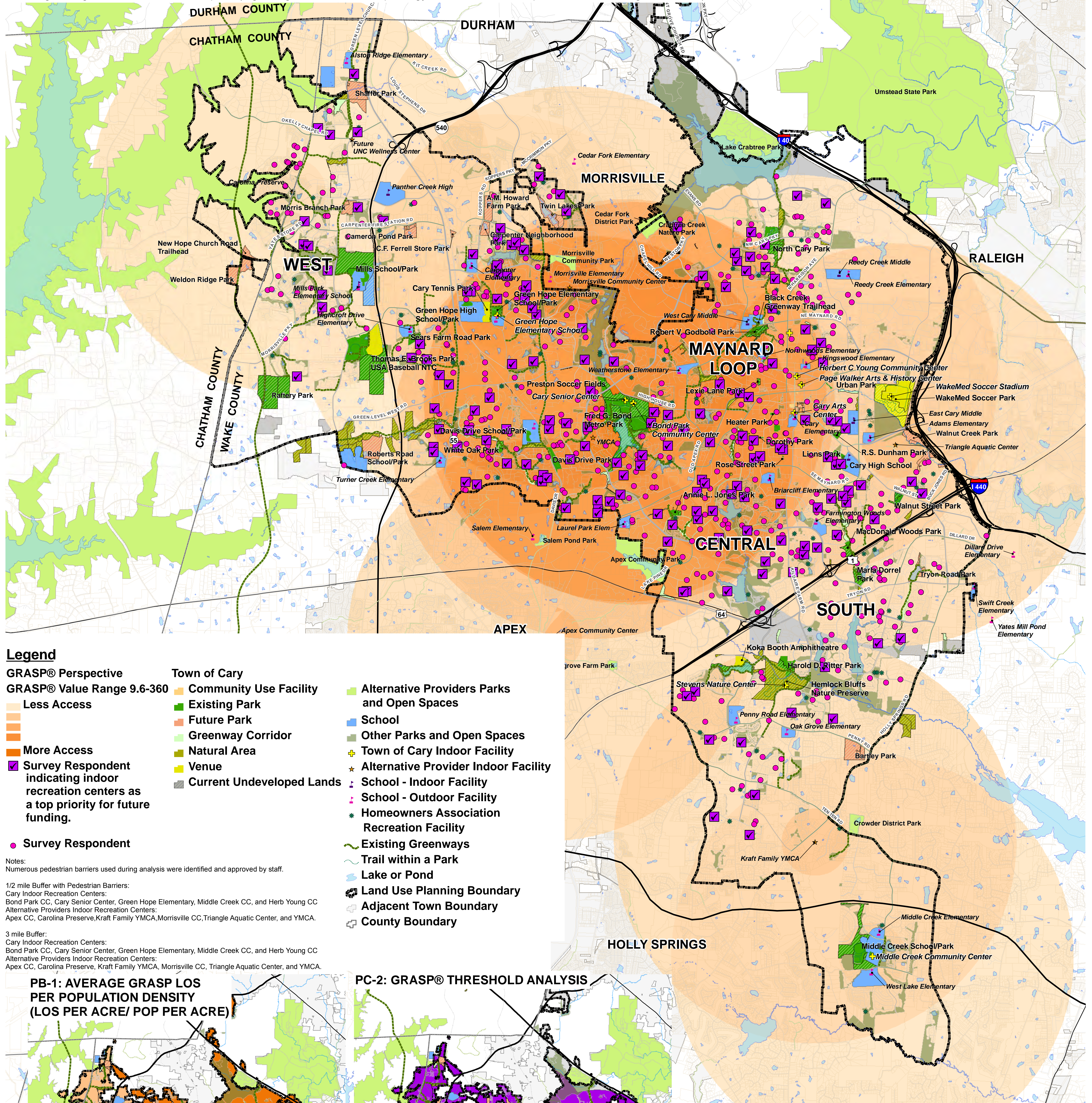


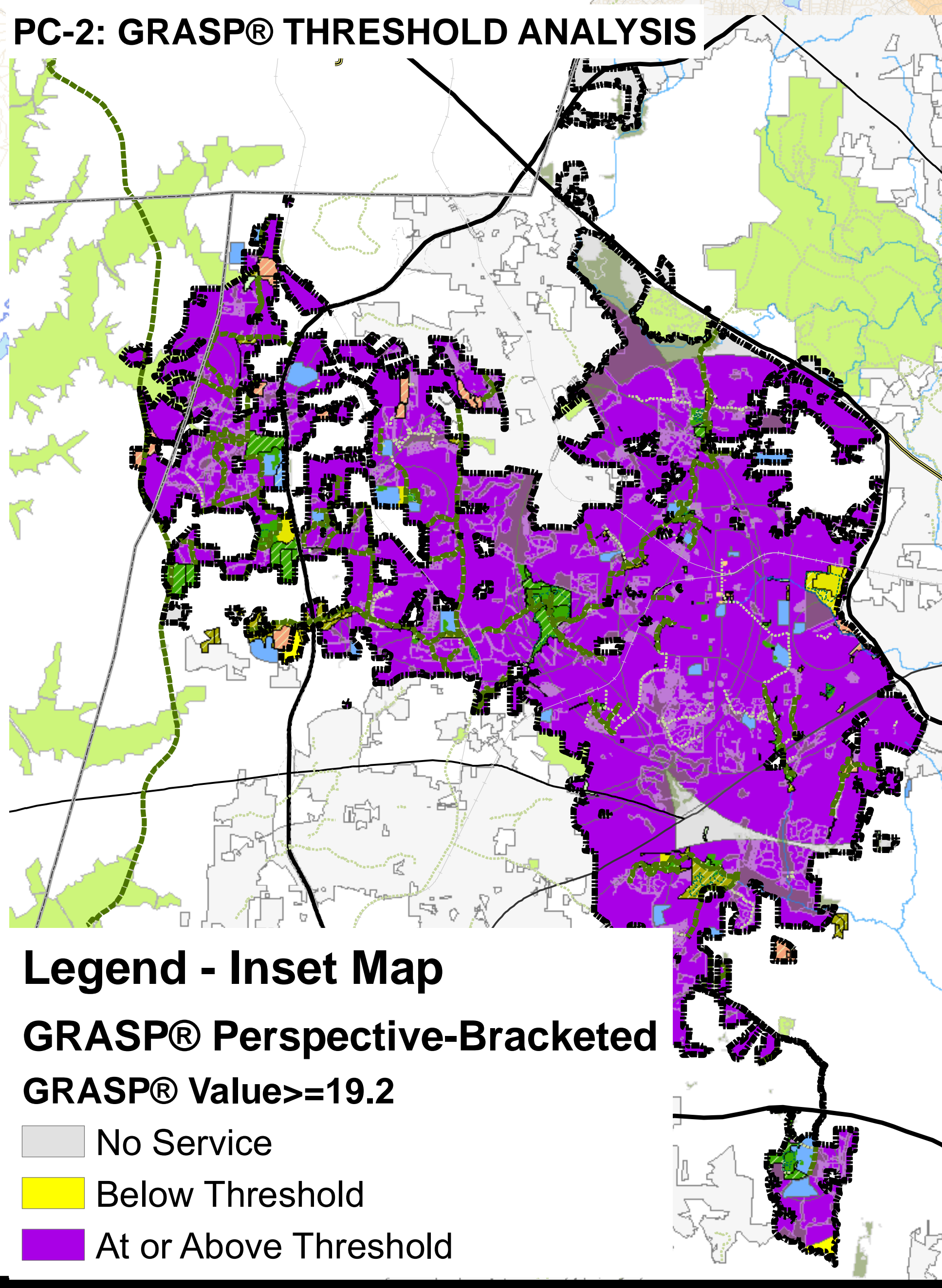
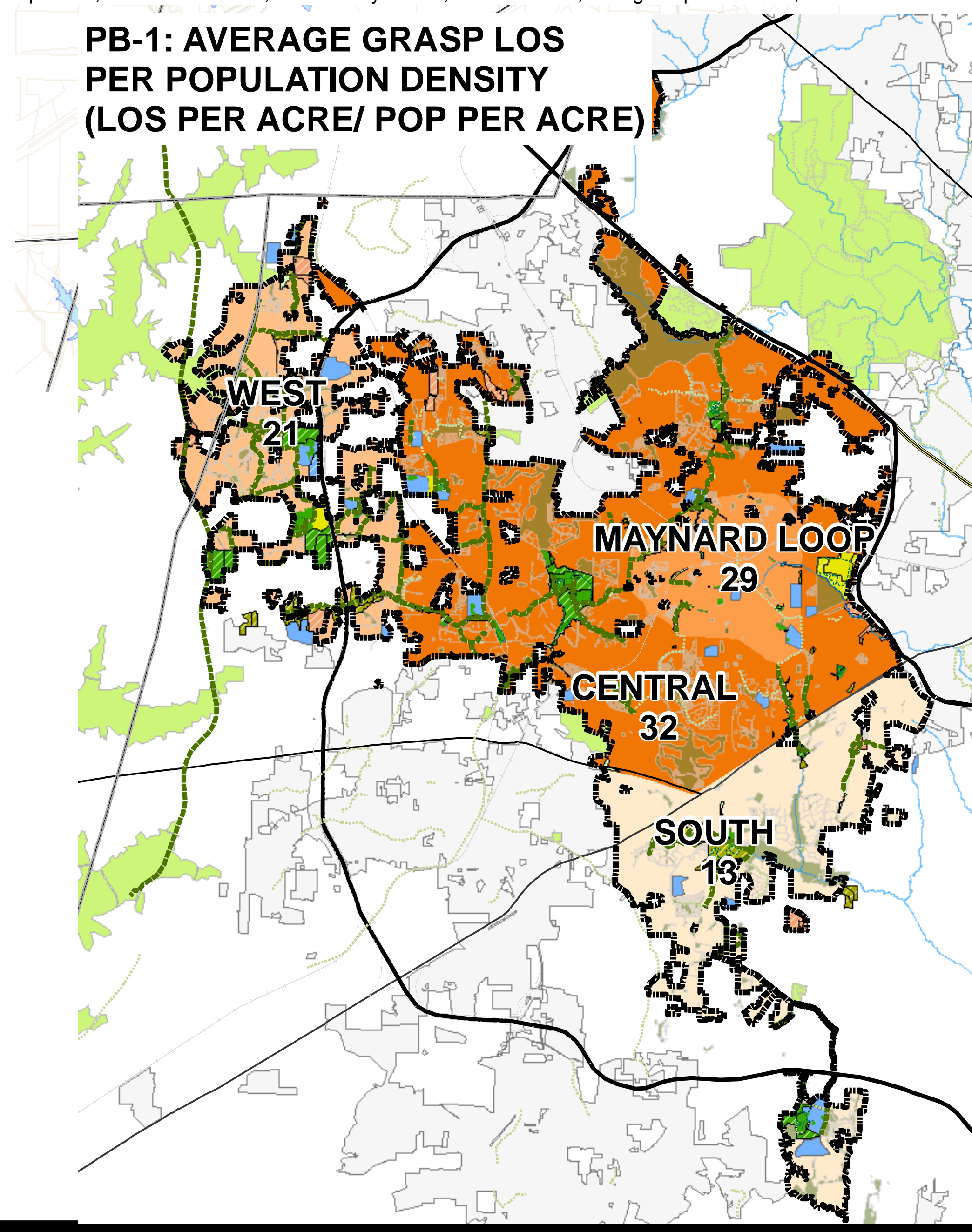
TOWN OF CARY, NORTH CAROLINA PARKS, RECREATION & CULTURAL RESOURCES MASTER PLAN

Note:
The locations of survey respondents that ranked new indoor recreation space as one of their three top priorities for future funding for improvements are plotted on this map (shown as a purple check mark).
The geo-coded locations of all other survey responses to this question are also plotted as shown by the pink circle icon.

Additional Survey Detail:
Question number 19 of the statistically-valid 2011 Master Plan Survey of Cary residents asked "What is your opinion concerning where future funding improvements should be spent?" Respondents were asked to then rank their top three from a list of nine choices, including adding new indoor recreation space (e.g., weight rooms, fitness space, gymnasiums, leisure aquatics, class/meeting rooms, etc.).



- Legend**
- GRASP® Perspective
 - GRASP® Value Range 9.6-360
 - Less Access
 - More Access
 - Survey Respondent indicating indoor recreation centers as a top priority for future funding.
 - Survey Respondent
- Town of Cary**
- Community Use Facility
 - Existing Park
 - Future Park
 - Greenway Corridor
 - Natural Area
 - Venue
 - Current Undeveloped Lands
- Alternative Providers Parks and Open Spaces
 - School
 - Other Parks and Open Spaces
 - Town of Cary Indoor Facility
 - Alternative Provider Indoor Facility
 - School - Indoor Facility
 - School - Outdoor Facility
 - Homeowners Association Recreation Facility
 - Existing Greenways
 - Trail within a Park
 - Lake or Pond
 - Land Use Planning Boundary
 - Adjacent Town Boundary
 - County Boundary
- Notes:**
Numerous pedestrian barriers used during analysis were identified and approved by staff.
- 1/2 mile Buffer with Pedestrian Barriers:**
Cary Indoor Recreation Centers: Bond Park CC, Cary Senior Center, Green Hope Elementary, Middle Creek CC, and Herb Young CC
Alternative Providers Indoor Recreation Centers: Apex CC, Carolina Preserve, Kraft Family YMCA, Morrisville CC, Triangle Aquatic Center, and YMCA.
- 3 mile Buffer:**
Cary Indoor Recreation Centers: Bond Park CC, Cary Senior Center, Green Hope Elementary, Middle Creek CC, and Herb Young CC
Alternative Providers Indoor Recreation Centers: Apex CC, Carolina Preserve, Kraft Family YMCA, Morrisville CC, Triangle Aquatic Center, and YMCA.



Map Produced For The Town of Cary Parks, Recreation & Cultural Resources Master Plan - By The GRASP® Team.
This Map Is Intended For Planning & Discussion Purposes Only - Please Refer To The Project Document For Map Details
Legend Elements May Vary Slightly In Size, Color And Transparency From Those Shown On Map.
Labels are limited to ensure legibility.
GIS Data Sources May Include: Town of Cary, Town of Apex, Wake County, US Census, ESRI, GRASP® Team - June 2011
Copyright© 2011 Cary