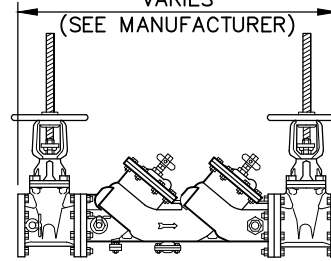


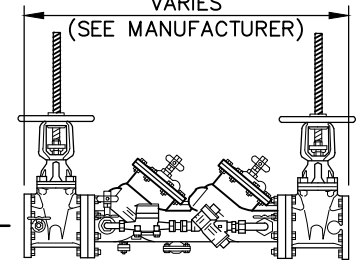
**NOTES:**

1. REDUCED PRESSURE PRINCIPLE BACKFLOW PREVENTION ASSEMBLY SHALL COMPLY WITH ASSE 1013 & AWWA C511.
2. REDUCED PRESSURE DETECTOR BACKFLOW PREVENTION ASSEMBLY SHALL COMPLY WITH ASSE 1047.
3. DOUBLE CHECK VALVE BACKFLOW PREVENTION ASSEMBLY SHALL COMPLY WITH ASSE 1015 & AWWA C510.
4. DOUBLE CHECK DETECTOR BACKFLOW PREVENTION VALVE ASSEMBLY SHALL COMPLY WITH ASSE 1048.
5. BACKFLOW ASSEMBLY SHALL MAINTAIN MINIMUM CLEARANCES FROM WALLS AND FLOOR AS SPECIFIED.
6. BACKFLOW ASSEMBLY SHALL BE IN A SEPARATE ROOM WITH EXTERIOR DOOR. THIS MAY BE A MECHANICAL ROOM OR A FIRE SPRINKLER ROOM, BUT SHALL BE SEPARATE FROM THE MAIN STRUCTURE.
7. PIPE MATERIAL SHALL BE CLASS 350 DIP APPROVED BY CARY.
8. INSTALLATION SHALL BE IN COMPLIANCE WITH ALL APPLICABLE CARY ORDINANCES AND SPECIFICATIONS IN ADDITION TO THE N.C. PLUMBING CODE.
9. PROPERTY OWNER SHALL BE RESPONSIBLE FOR MAINTENANCE AND OPERATION OF BACKFLOW ASSEMBLY AND COMPLIANCE WITH REPORTING AND TESTING REQUIREMENTS.
10. ALL 'NO LEAD' BRASS COMPONENTS SHALL MEET UNS C89833 AS PER ASTM B584.
11. RPZS ARE ALLOWED ONLY WITH SPECIFIC PERMISSION OF CARY CROSS CONNECTION ORC.

NO LEAD DOUBLE CHECK VALVE  
BACKFLOW PREVENTION ASSEMBLY  
VARIES

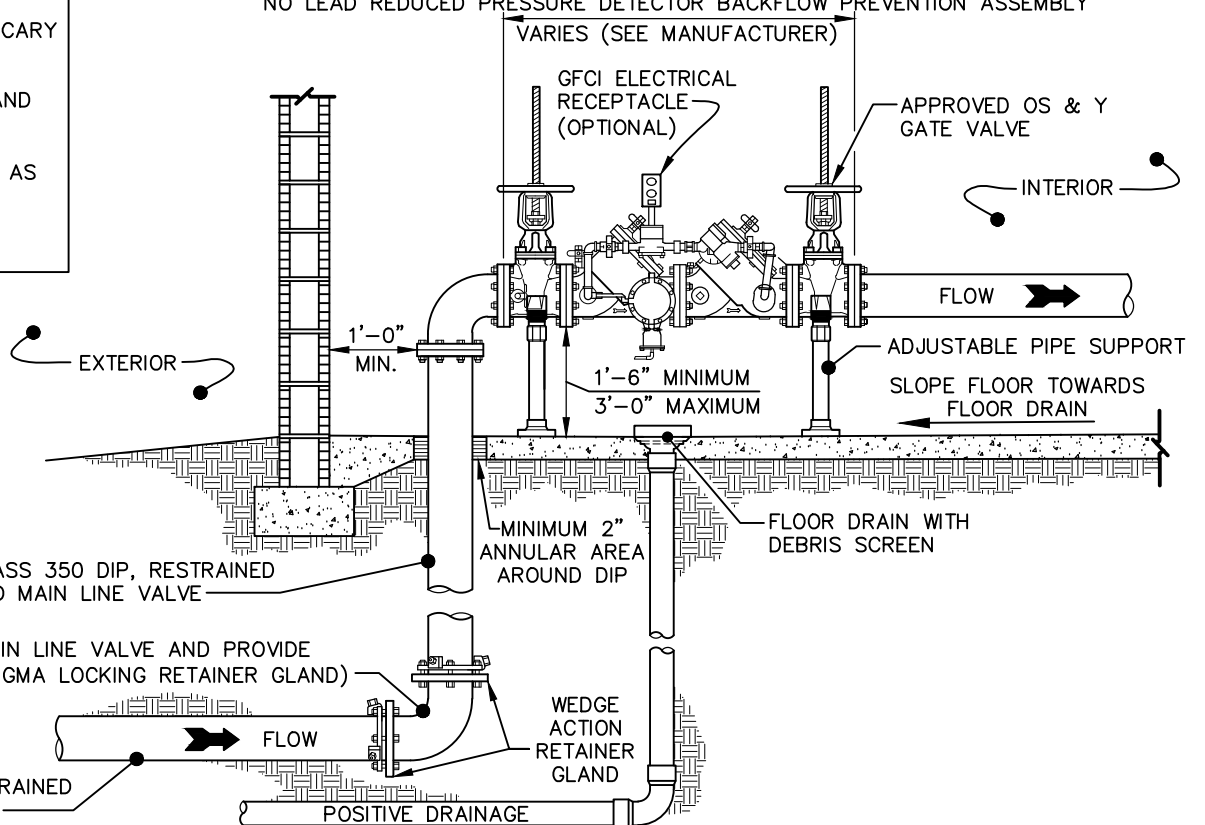


NO LEAD DOUBLE CHECK DETECTOR  
BACKFLOW PREVENTION VALVE ASSEMBLY  
VARIES



OR

NO LEAD REDUCED PRESSURE DETECTOR BACKFLOW PREVENTION ASSEMBLY  
VARIES (SEE MANUFACTURER)



DIP, MJ FITTING (ROD BACK TO MAIN LINE VALVE AND PROVIDE REACTION BLOCKING OR INSTALL SIGMA LOCKING RETAINER GLAND)

APPROVED CLASS 350 DIP, RESTRAINED OR RODDED TO MAIN LINE VALVE

WEDGE ACTION RETAINER GLAND

POSITIVE DRAINAGE

**STANDARD COMMERCIAL INDOOR BACKFLOW ASSEMBLY,  
(2 1/2" DIAMETER AND LARGER)**

DETAIL No.

6200.06



EFFECTIVE: 07/01/21