

MAXIMUM 12" CHIMNEY.  
 PRECAST OR APPROVED  
 MANUFACTURED GRADE  
 RINGS ONLY. NO BRICKS  
 ALLOWED.

STANDARD MANHOLE RING & COVER  
 (SEE DETAIL 7000.03, 7000.07 & 7000.11)

USE FOUR  $\frac{3}{8}$ " x  $4\frac{1}{2}$ " ANCHOR  
 BOLTS TO BOLT FRAME TO SPACER.  
 USE ROPE MASTIC SEAL BETWEEN  
 FRAME & SPACER.

STEP  
 (SEE NOTE)

ECCENTRIC  
 TAPER UNIT

4'-0" OR 5'-0"  
 DIAMETER

HEIGHT  
 VARIES

RISER UNIT

BASE UNIT

10" MINIMUM

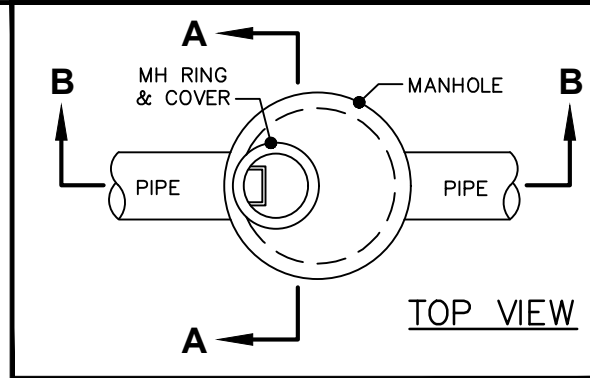
CONCRETE INVERT

PIPE

PIPE

12" BEDDING (#57 STONE)

SECTION B-B



ALL EXTERNAL JOINTS SHALL BE SEALED  
 WITH AN APPROVED JOINT SEALING MATERIAL

ALL LIFT HOLES WHICH COMPLETELY  
 PENETRATE THE MANHOLE SHALL BE  
 FILLED WITH NON-SHRINKING GROUT

O-RING OR BUTYL RUBBER JOINT

CONCRETE INVERT MEETING SPECIFICATIONS

EXTENDED BASE THICKNESS

4' DIAMETER: 6"  
 5' DIAMETER: 8"

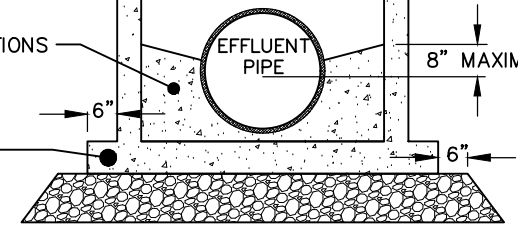
ECCENTRIC  
 TAPER UNIT

RISER UNIT

BASE UNIT

EFFLUENT  
 PIPE

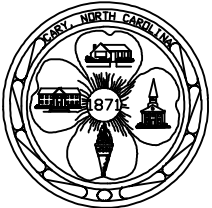
8" MAXIMUM



SECTION A-A

NOTES:

1. ALL MANHOLE CONNECTIONS SHALL BE PREFABRICATED OR CORED WITH A CONCRETE CORING MACHINE.
2. ALL MANHOLES SHALL BE VACUUM TESTED.
3. EXTENDED BASE REQUIRED FOR ALL MANHOLES WITH MORE THAN 12-FT DEPTH OF BURY.
4. PROVIDE A MINIMUM 0.1 FOOT IN-OUT DROP FOR STRAIGHT RUNS AND 0.2 FOOT IN-OUT DROP FOR ANGLE RUNS.
5. PROVIDE ONLY FIRST AND LAST STEP IN MANHOLE.



STANDARD PRECAST CONCRETE MANHOLE

DETAIL No.

7000.01

EFFECTIVE: 07/01/21