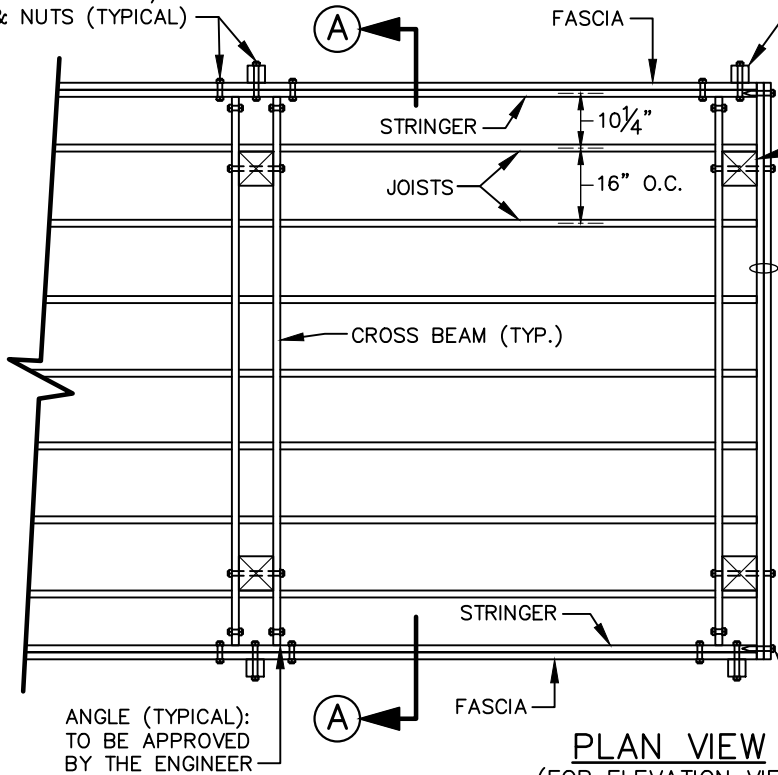


THRU BOLTS W/ WASHERS & NUTS (TYPICAL)

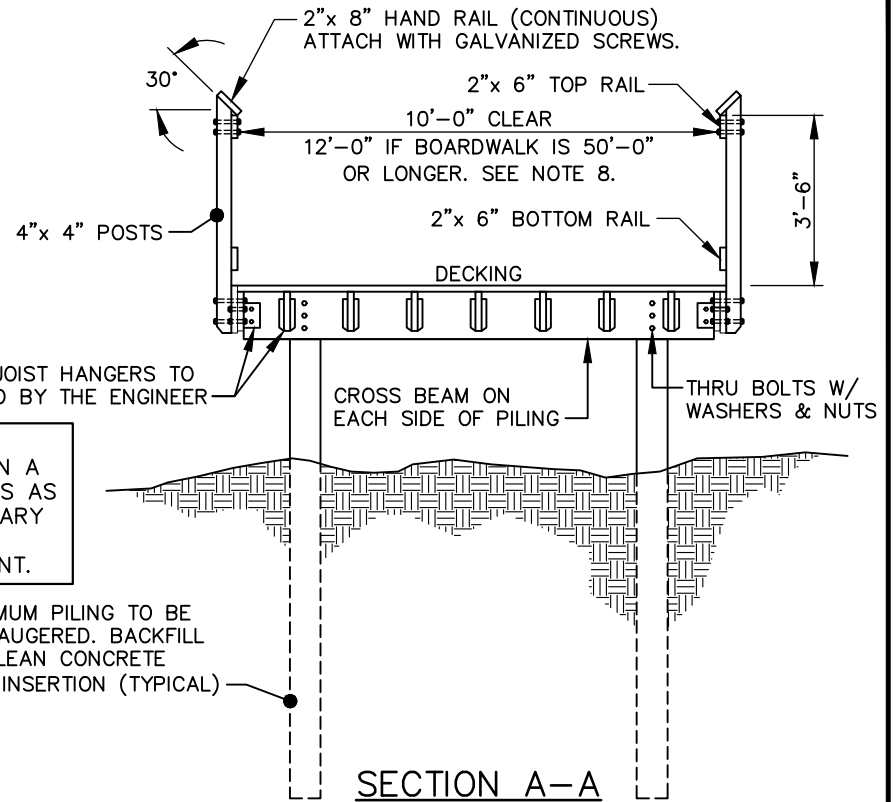


PLAN VIEW
(FOR ELEVATION VIEW
SEE DETAIL 9500.08)

NOTE:
TO BE USED ONLY ON A
CASE-BY-CASE BASIS AS
APPROVED BY THE CARY
TRANSPORTATION &
FACILITIES DEPARTMENT.

8"x 8" MINIMUM PILING TO BE
DRIVEN OR AUGERED. BACKFILL
HOLE WITH LEAN CONCRETE
AFTER PILE INSERTION (TYPICAL)

LAG BOLTS W/
WASHERS (TYP.)



COMPOSITE MATERIAL INFORMATION

MFG: MOISTURE SHIELD

www.moistureshield.com

OR EQUIVALENT WITH APPROVAL

BY TRANSPORTATION & FACILITIES STAFF

PRODUCT: MOISTURESHIELD VANTAGE

COLOR: CAPE COD GREY



EFFECTIVE: 07/01/21

5,000 LB BOARDWALK (PLAN & SECTION VIEW)

DETAIL No.

9500.07