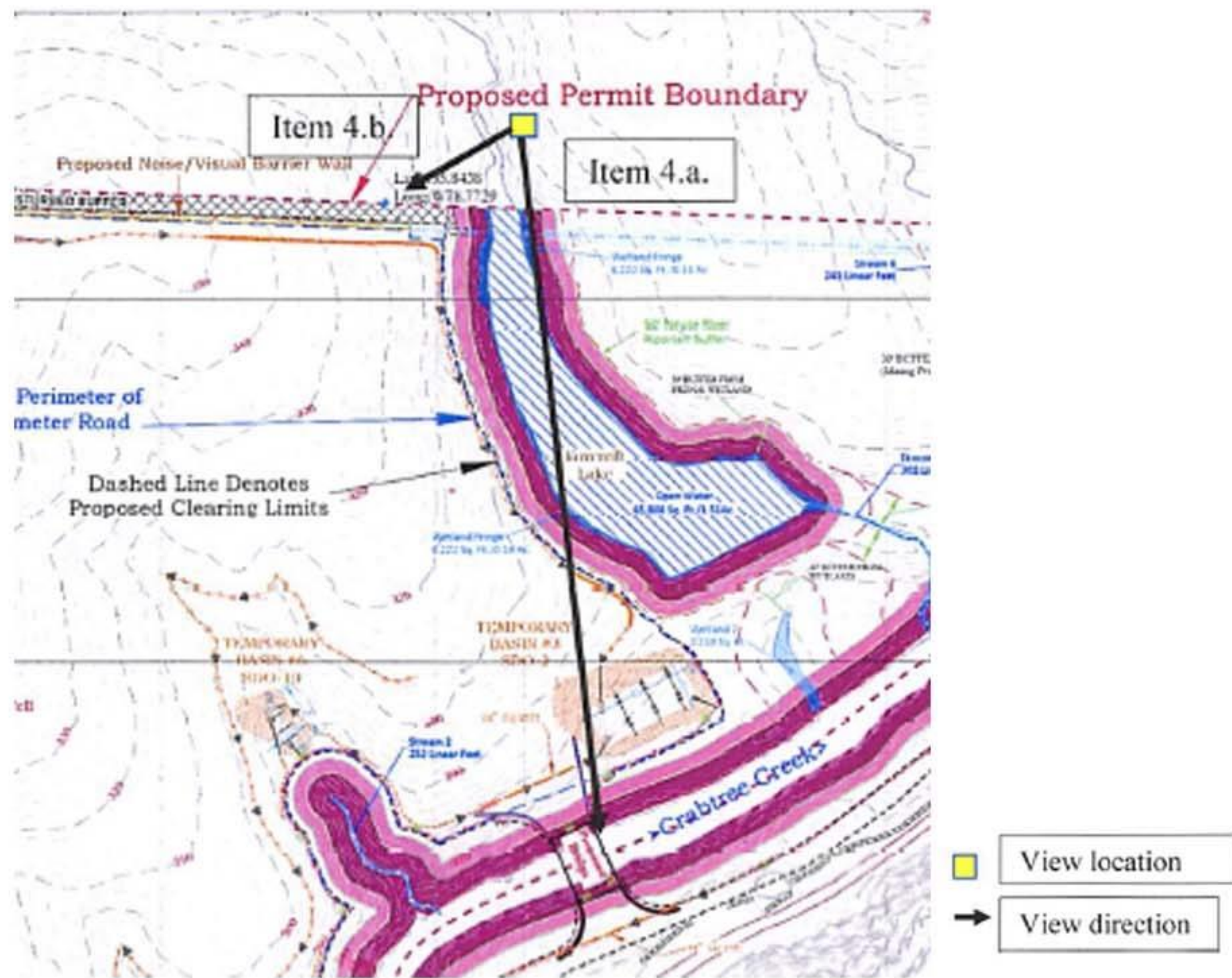


View location
 View direction

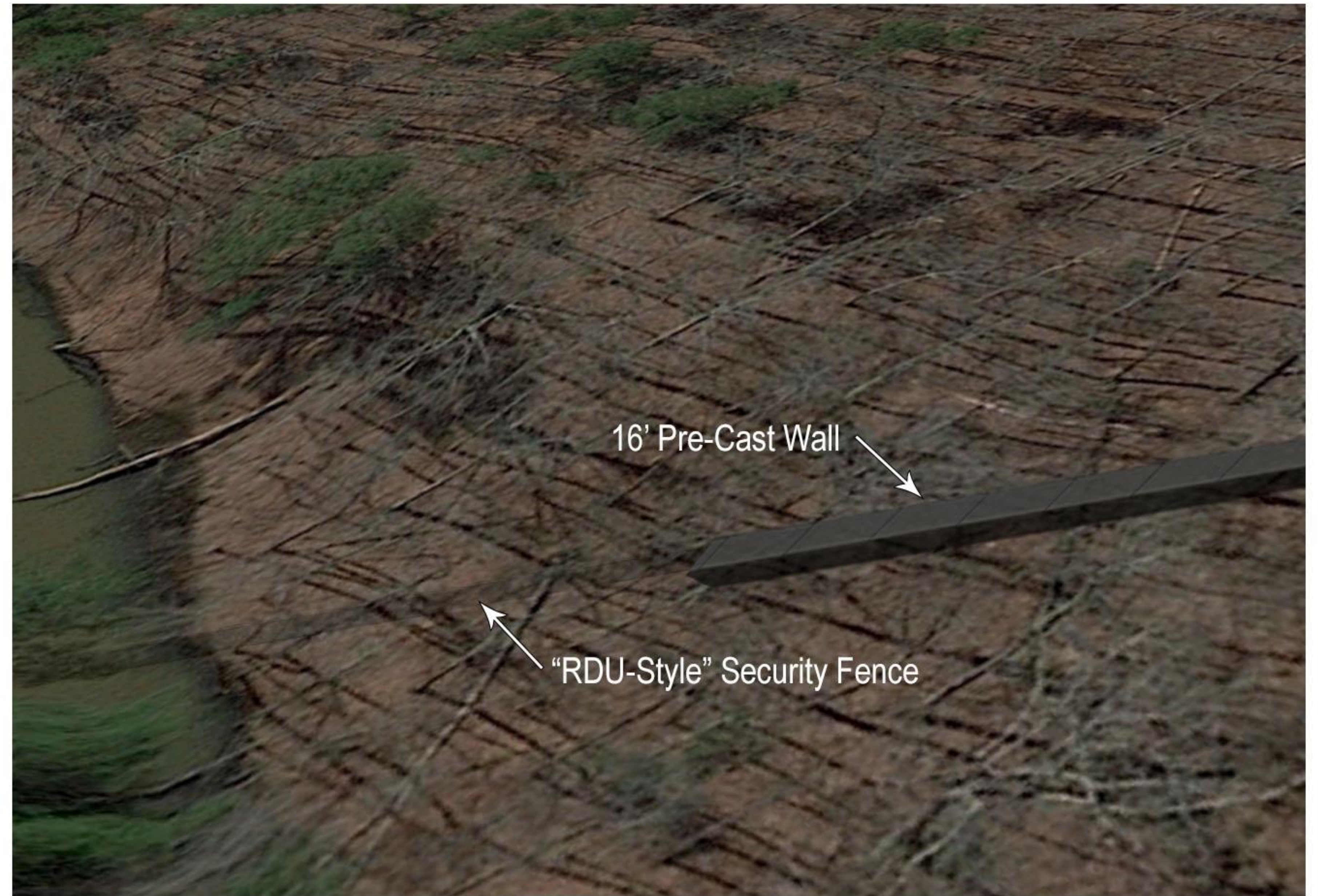
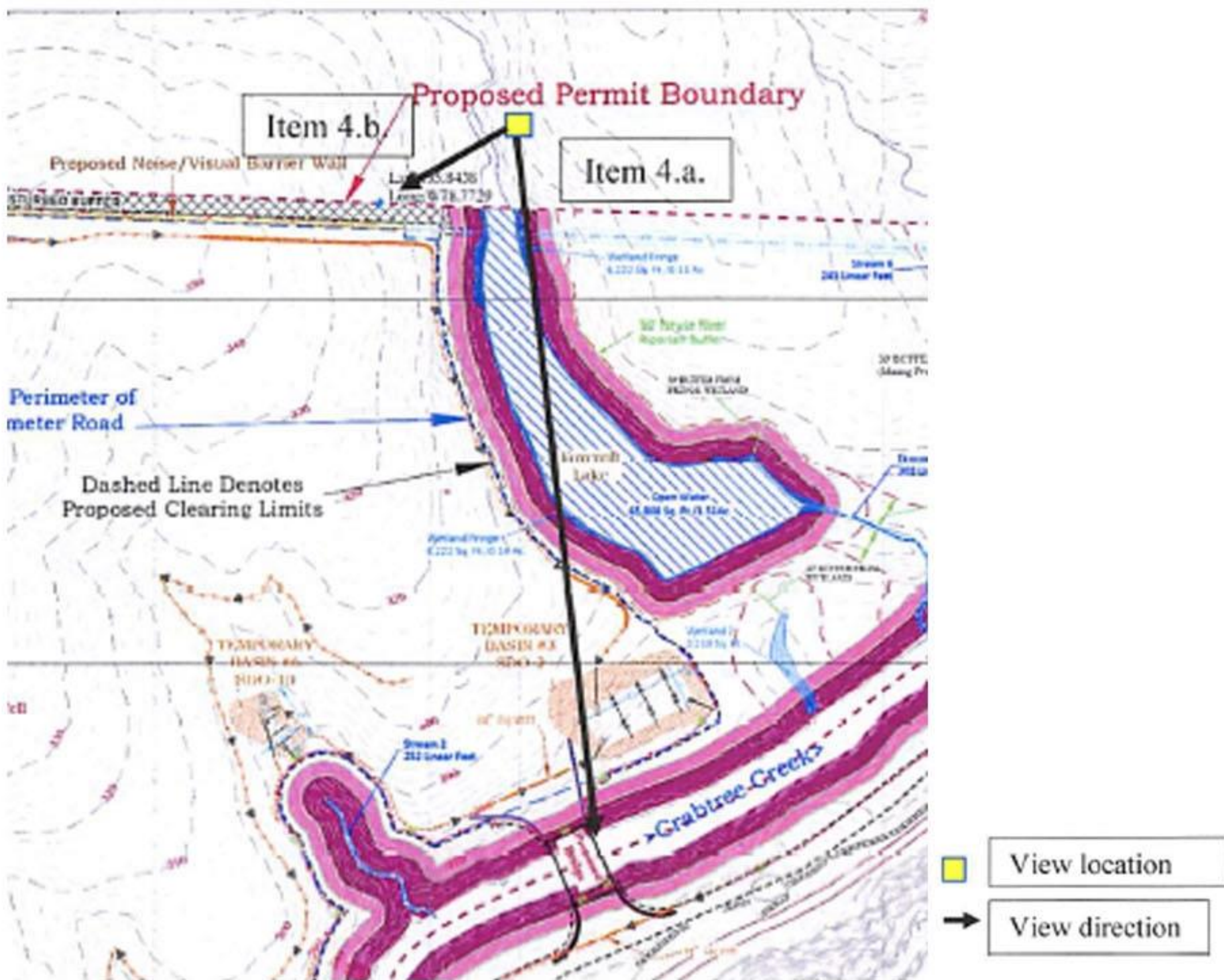
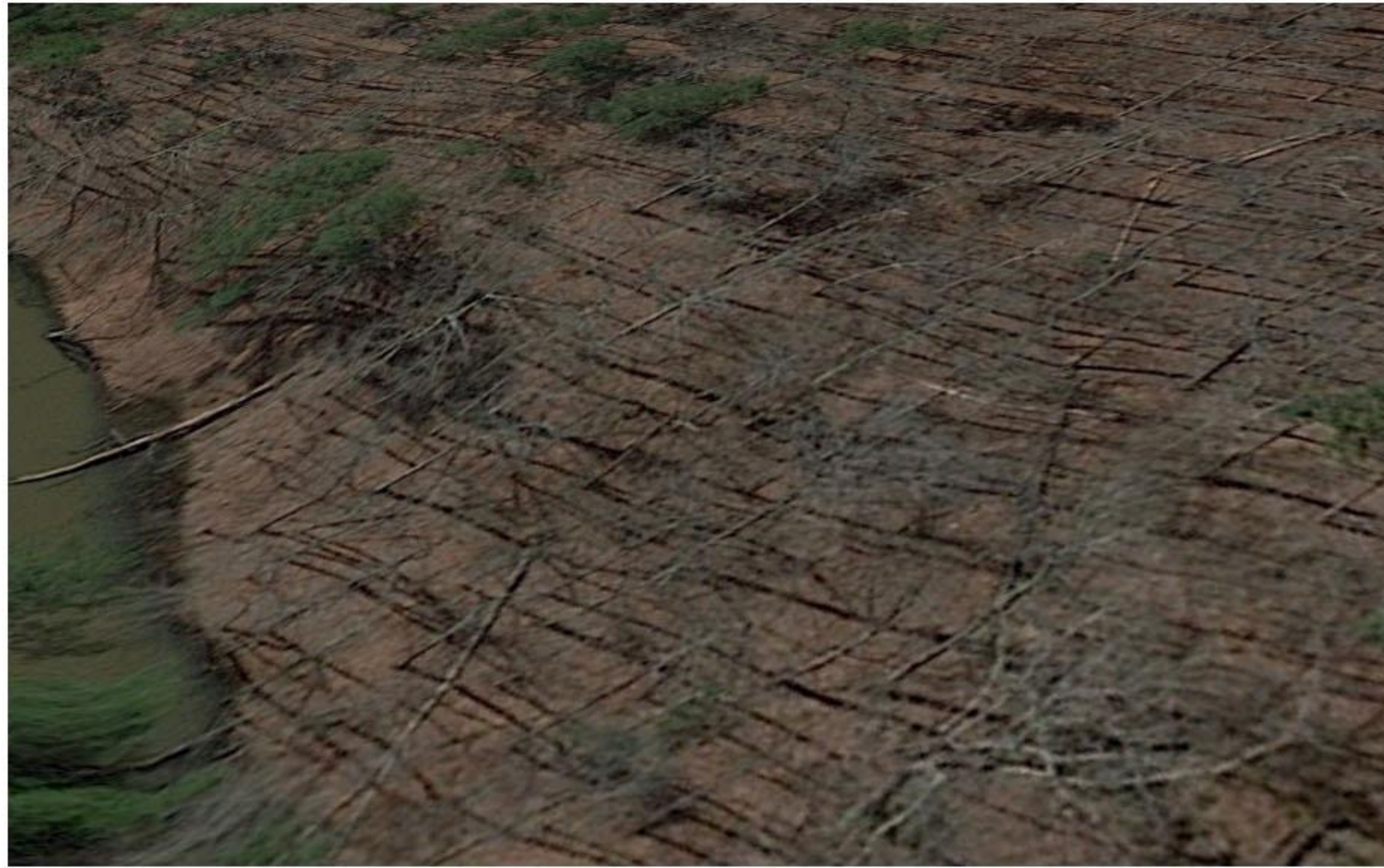
Conceptual Bird's Eye Perspective

4.a: Looking from William B. Umstead State Park across Foxcroft Lake towards the haul bridge across Crabtree Creek



Conceptual Ground Level Perspective

4.a: Looking from William B. Umstead State Park across Foxcroft Lake towards the haul bridge across Crabtree Creek

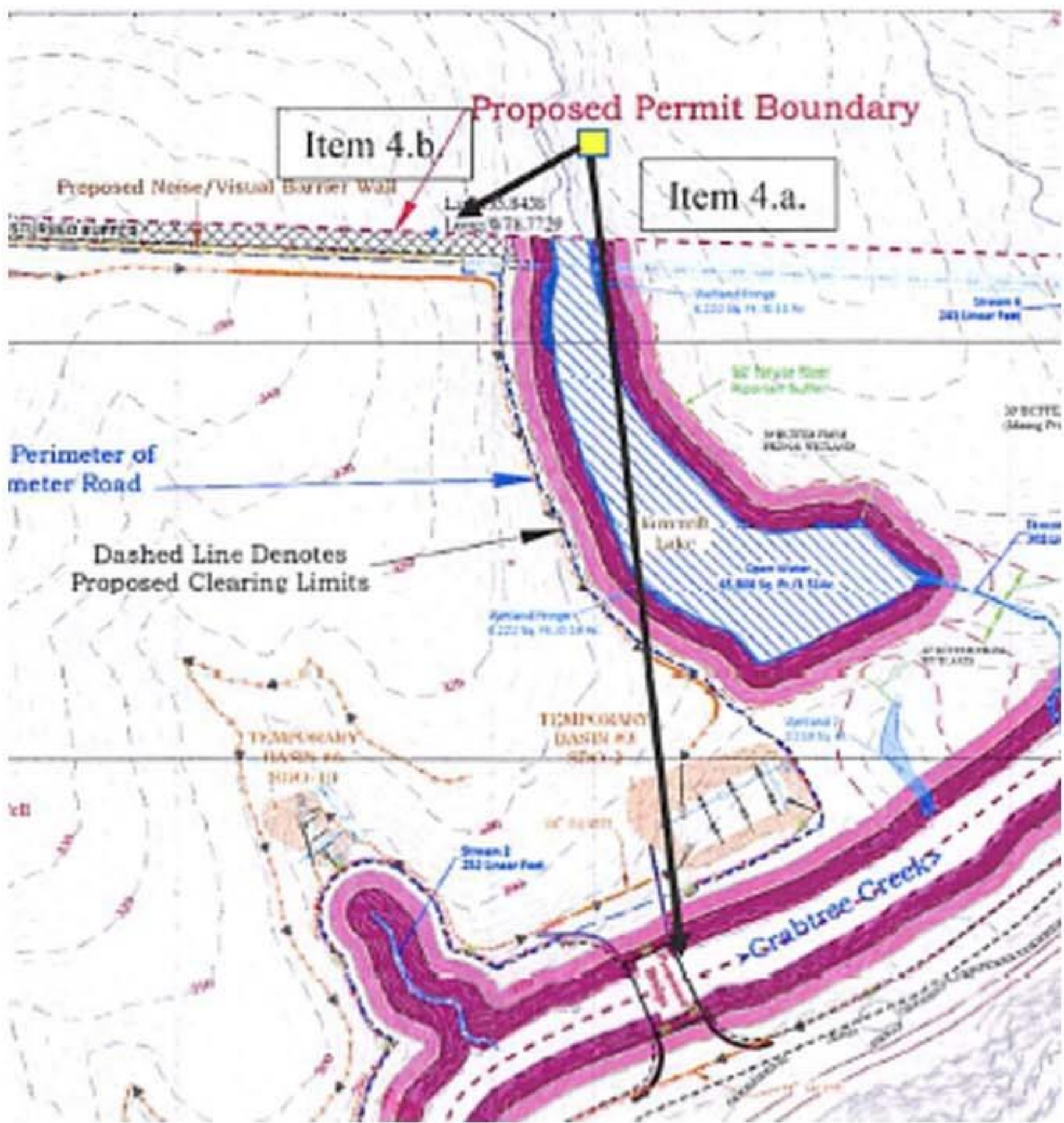


Conceptual Bird's Eye Perspective

4.b: Looking from William B. Umstead State Park across Foxcroft Lake towards the sound barrier wall located on the northern boundary of the proposed pit.



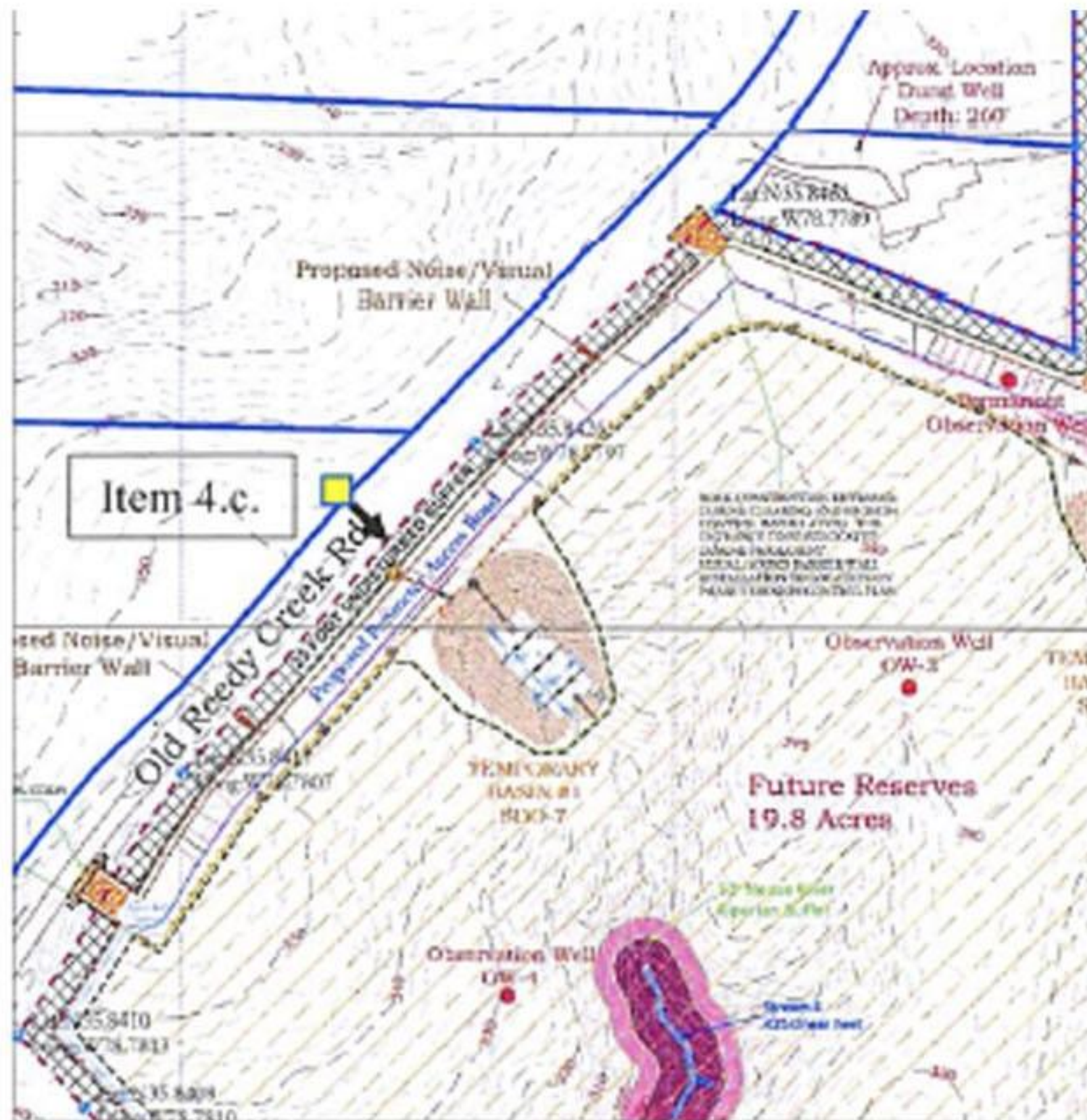
*Photo taken in the vicinity of the proposed area during the winter months.



*Photo taken in the vicinity of the proposed area during the winter months.

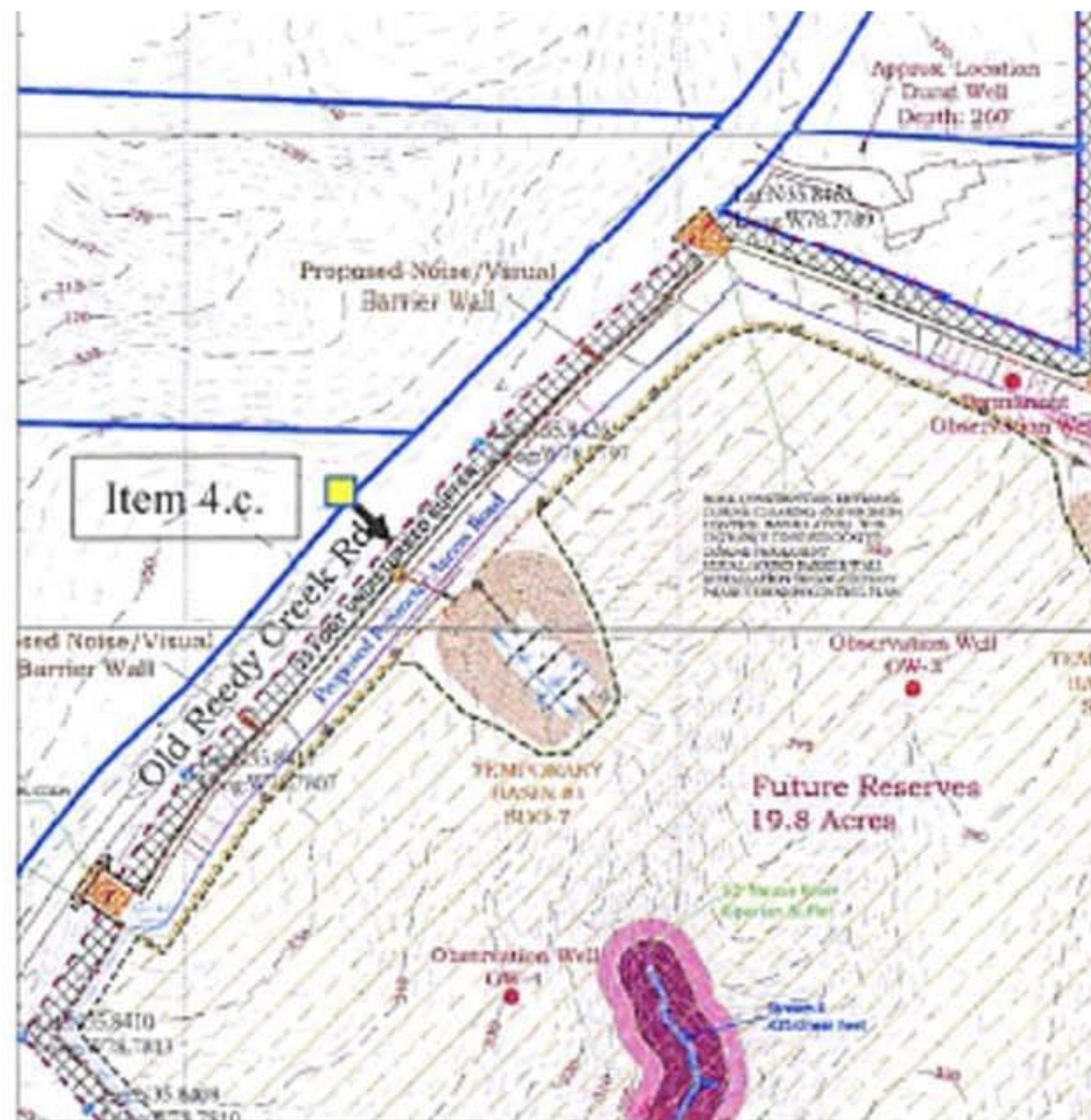
4.b: Looking from William B. Umstead State Park across Foxcroft Lake towards the sound barrier wall located on the northern boundary of the proposed pit.

Conceptual Ground Level Perspective



4.c: Looking from Old Reedy Creek Road/East Coast Greenway towards the proposed quarry site.

Conceptual Bird's Eye Perspective



- View location
- View direction

4.c: Looking from Old Reedy Creek Road/East Coast Greenway towards the proposed quarry site.

Conceptual Ground Level Perspective