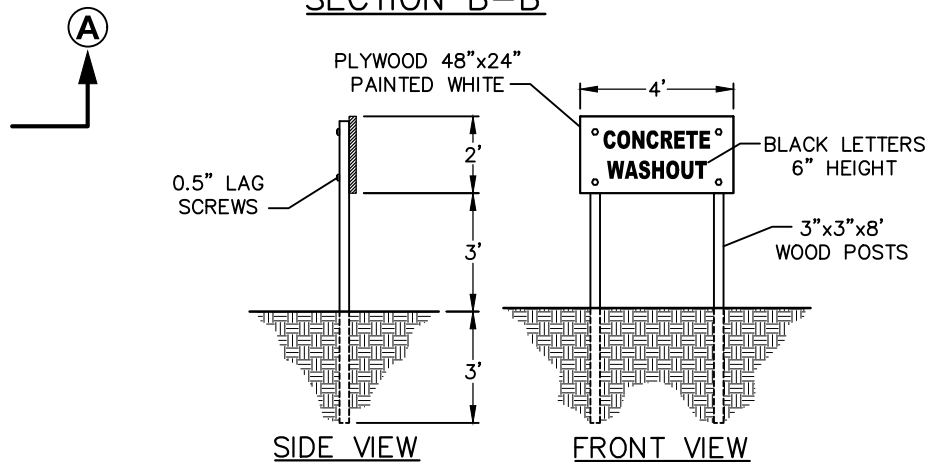
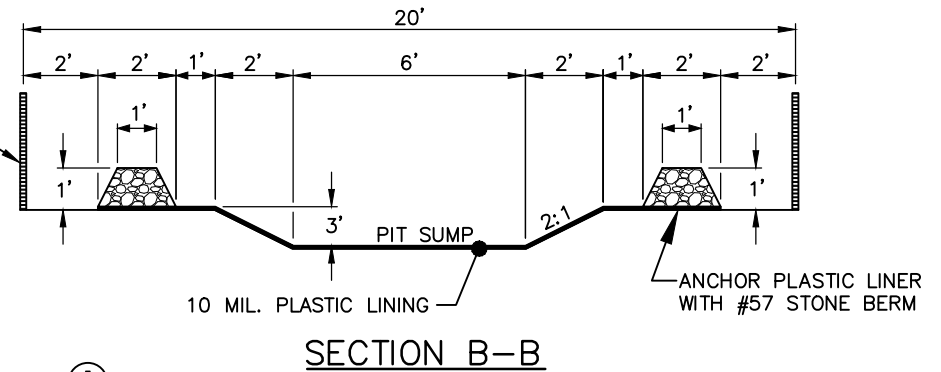
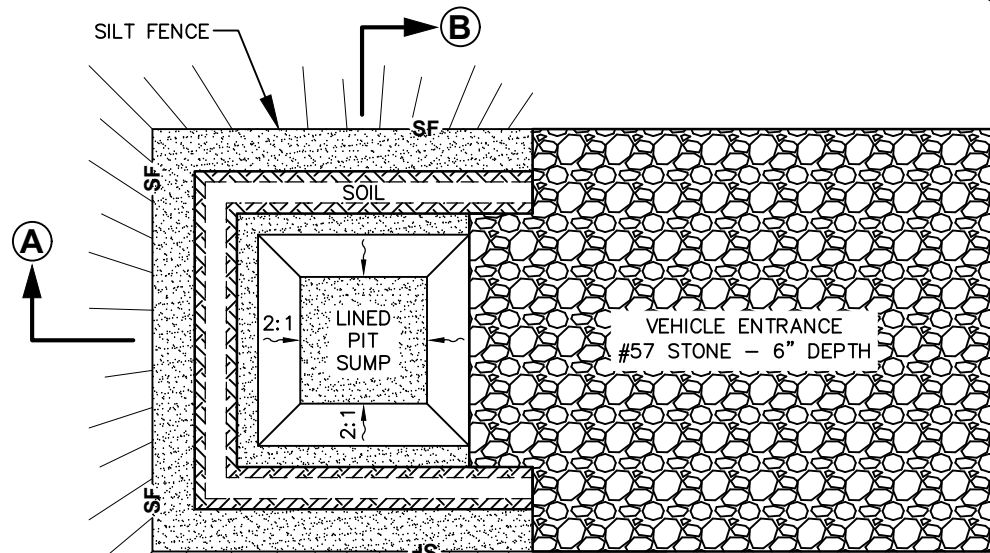


- NOTES:**
1. ACTUAL LAYOUT TO BE DETERMINED IN FIELD.
 2. THE "CONCRETE WASHOUT" SIGN SHALL BE INSTALLED WITHIN 30 FEET OF THE TEMPORARY CONCRETE WASHOUT FACILITY.
 3. PIT CAPACITY IS MINIMUM OF 6 CUBIC FEET PER 10 CUBIC YARDS OF CONCRETE.
 4. INSTALL TEMPORARY CONCRETE WASHOUTS PER CARY REQUIREMENTS, WHERE APPLICABLE. IF AN ALTERNATE METHOD OR PRODUCT IS TO BE USED, CONTACT A CARY STORMWATER FIELD SERVICES TECHNICIAN.



"CONCRETE WASHOUT" SIGN
(SEE NOTE 2)

PLAN VIEW

"CONCRETE WASHOUT" SIGN DETAILS

CONCRETE WASHOUT - BELOW GRADE



EFFECTIVE: 07/01/22

DETAIL No.
4000.28
SHEET 1 OF 2