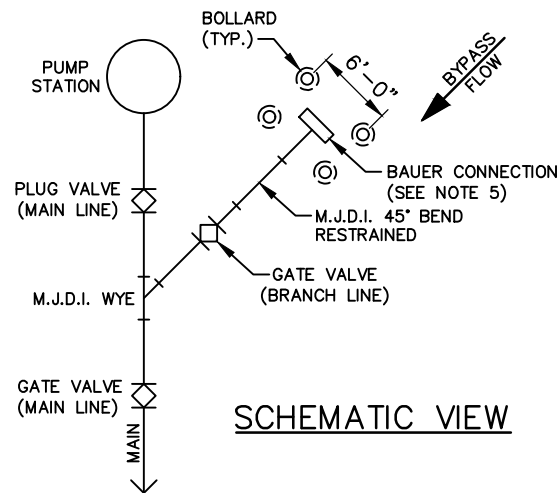
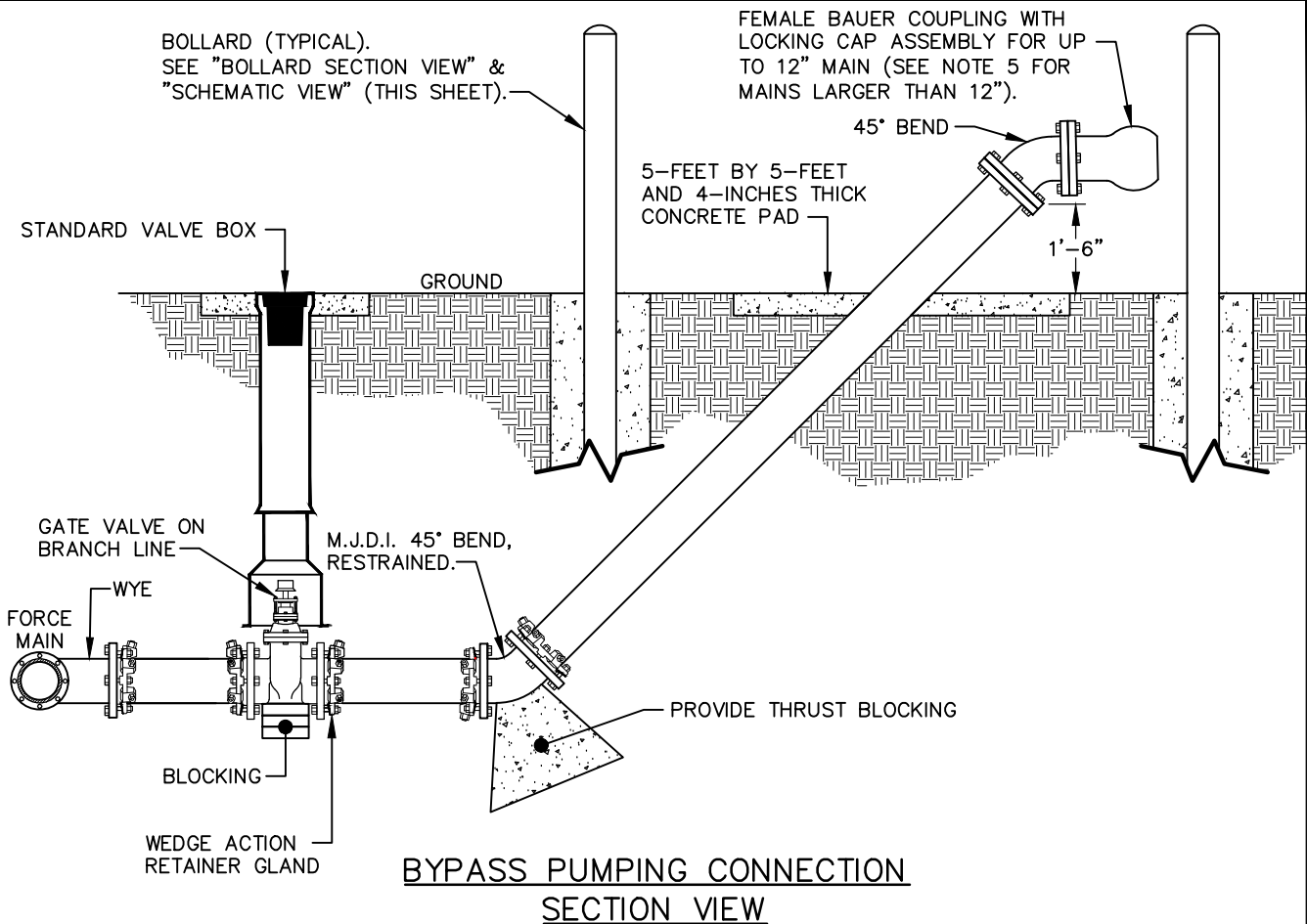


BOLLARD SECTION VIEW

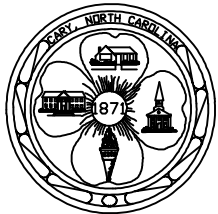


SCHEMATIC VIEW



NOTES:

1. THE PIGGING/BYPASS CONNECTION SHALL BE LOCATED WITHIN 50 FEET OF THE PUMP STATION VALVE VAULT.
2. ALL PIPING WITHIN THE BYPASS ASSEMBLY SHALL BE INTERIOR COATED WITH APPROVED COATING LISTED ON CARY'S APPROVED PRODUCTS LIST.
3. ALL BURIED PIPES, VALVES, AND FITTINGS SHALL BE DUCTILE IRON AND RESTRAINED WITH WEDGE ACTION RETAINER GLANDS AND BLOCKING AS SHOWN.
4. ALL PIPING FOR THE PIGGING/BYPASS CONNECTION SHALL BE THE SAME DIAMETER AS THE FORCE MAIN.
5. FOR FORCE MAINS LARGER THAN 12", A REDUCER AND BLIND FLANGE IS REQUIRED IN PLACE OF THE BAUER CONNECTION.



STANDARD FORCE MAIN PIGGING & BYPASS CONNECTION

DETAIL No.

7200.10

EFFECTIVE: 07/01/22