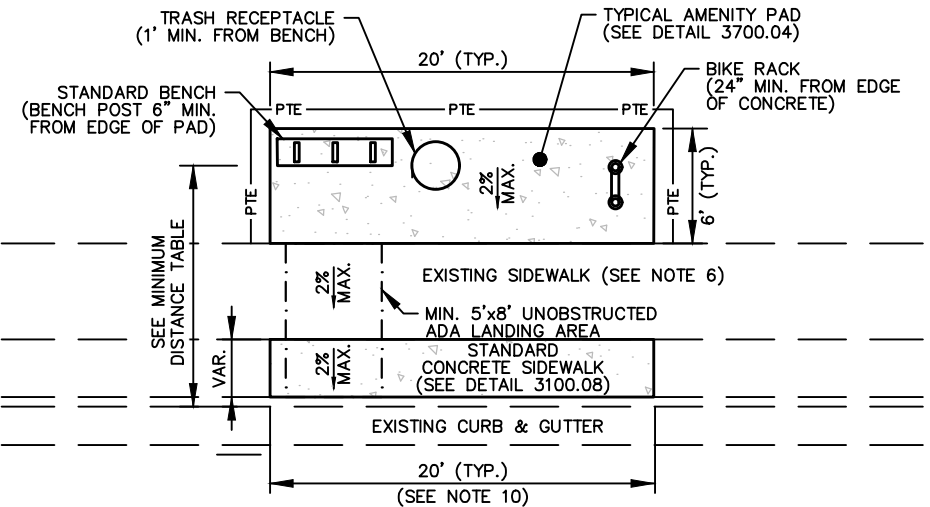


AMENITY NOTES:

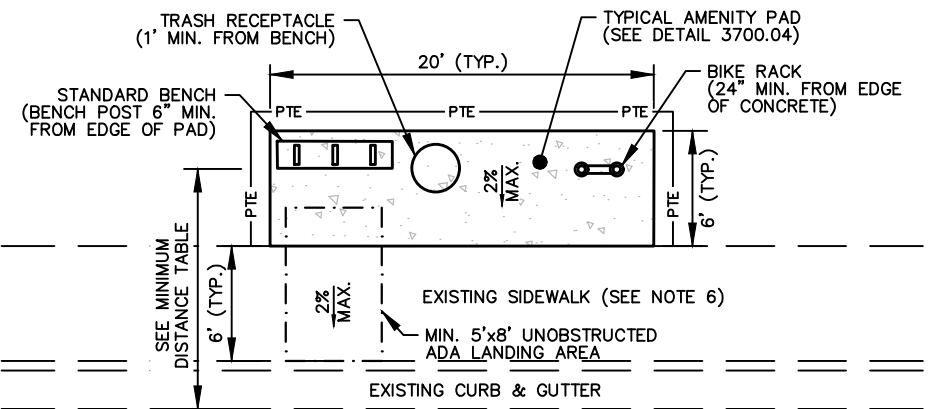
1. COORDINATE WITH CARY STAFF FOR AMENITIES REQUIRED AT EACH BUS STOP LOCATION. CONTACT CARY STAFF TO DETERMINE AMENITY MANUFACTURERS, MODELS, AND FINISH COLORS REQUIRED AT EACH LOCATION.
2. MINIMUM DISTANCE REQUIREMENTS ARE BASED ON DISTANCES SHOWN ON 'NCDOT BUS SHELTER & BUS STOP GUIDELINES' DATED FEBRUARY 3, 2017 OR LATEST VERSION.
3. ANY CUSTOM AMENITIES PROPOSED WILL REQUIRE REVIEW AND APPROVAL BY GOCARY & CARY STAFF.
4. A MINIMUM 6' PEDESTRIAN PATH IS TO BE RETAINED BETWEEN THE BACK OF CURB AND ANY AMENITIES AT ALL LOCATIONS.

GENERAL BUS STOP IMPROVEMENTS NOTES:

5. A PERMANENT TRANSIT EASEMENT (PTE) OR PERMANENT PUBLIC RIGHT-OF-WAY IS TO BE PROVIDED FOR THE AMENITY AREA, IF LOCATED OUTSIDE OF EXISTING RIGHT-OF-WAY, AT A MINIMUM 1' OFFSET FROM THE AMENITY AREA. COORDINATE WITH GOCARY FOR ANY REQUIRED EASEMENT LANGUAGE.
6. ANY EXISTING SIDEWALK IN VICINITY IS TO BE EVALUATED FOR ADA COMPLIANCE. IF EXISTING SIDEWALK CROSS SLOPES EXCEED 2% OR HAS ABRUPT SURFACE TRANSITIONS THE SIDEWALK WILL BE REQUIRED TO BE REMOVED AND REPLACED AT A MAXIMUM CROSS SLOPE OF 2% TO PROVIDE AN ADA ACCESSIBLE AREA FOR THE LENGTH OF THE BUS STOP AREA.
7. A FLAT, CLEARED AREA OF A MINIMUM OF 1' IS TO BE PROVIDED AROUND THE AMENITY AREA FOR MAINTENANCE.
8. STORMWATER RUNOFF IS TO BE DIVERTED AWAY FROM THE AMENITY AREA.
9. REFER TO THE LATEST VERSION 'NCDOT BUS SHELTER & BUS STOP GUIDELINES' FOR MORE INFORMATION.
10. USE 30' LANDING PAD LENGTH AT STOPS SHARED BETWEEN TWO OR MORE TRANSIT PROVIDERS.



AMENITIES WITH SIDEWALK AND UTILITY STRIP



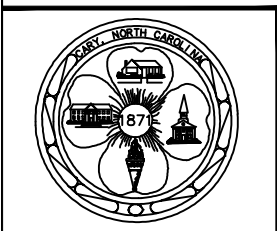
AMENITIES WITH SIDEWALK AT BACK OF CURB

COMMON BUS STOP AMENITIES¹

| |
|--------------------------------------|
| BUS SHELTERS |
| BUS SHELTER BENCHES |
| FREE STANDING BENCHES |
| BIKE RACKS |
| POST MOUNTED SECURITY LIGHT SYSTEMS |
| REAL-TIME DISPLAY SIGNAGE |
| SHELTER SOLAR LIGHTING |
| TRASH & RECYCLING CANS |
| ELECTRICAL CONNECTIONS FOR AMENITIES |

MINIMUM DISTANCES FROM STRUCTURE ANCHOR TO EDGE OF PAVEMENT
(BASED ON POSTED SPEED LIMIT)

| | |
|--------|-----|
| 25 MPH | 8' |
| 35 MPH | 10' |
| 45 MPH | 12' |



EFFECTIVE:07/01/23

TYPICAL BUS STOP - BENCH LAYOUTS

DETAIL No.
3700.02