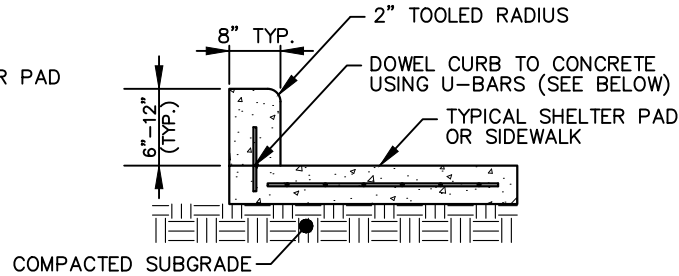


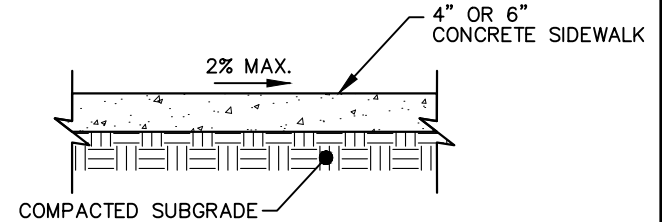
CONCRETE TURNDOWN

APPLICABLE FOR USE ADJACENT TO PAVED AREAS



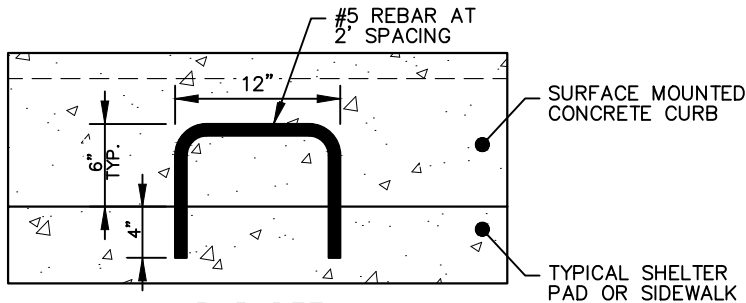
SURFACE MOUNTED CONCRETE CURB

HEIGHT & WIDTH MAY VARY BASED ON FIELD CONDITIONS. SPECIFY ON PLANS.



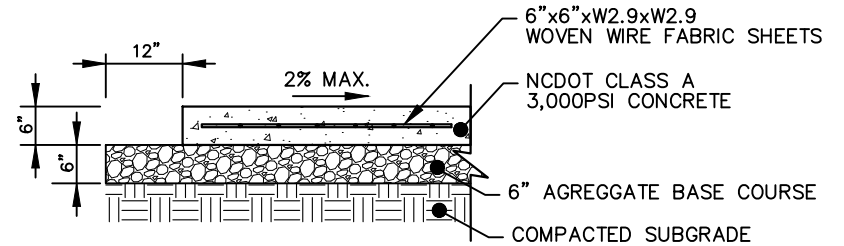
TYPICAL AMENITY PAD

USE 6" FOR AMENITY AREAS WHERE BENCHES, BIKE RACKS, OR OTHER AMENITIES ARE TO BE INSTALLED. SPECIFY CONCRETE THICKNESS ON PLANS. SEE DETAIL 9300.01.



U-BAR DETAIL

ADJUST U-BAR HEIGHT TO PROVIDE MINIMUM 2" COVER WHERE CURB HEIGHT VARIES

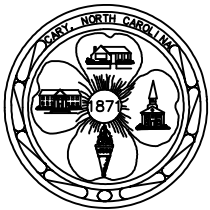


TYPICAL SHELTER PAD

USE FOR AMENITY AREAS WHERE SHELTERS ARE TO BE INSTALLED

NOTES:

1. SIDEWALKS SHALL BE CONSTRUCTED IN ACCORDANCE WITH DETAIL 3100.08 – STANDARD CONCRETE SIDEWALK.
2. REINFORCE SHELTER PAD WITH WOVEN WIRE FABRIC SHEETS. WOVEN WIRE FABRIC SHEETS SHALL HAVE MINIMUM 6" OVERLAPS AND PLACED WITHIN 3" ON ALL SIDES.
3. CONCRETE TURNDOWN IS TO PROVIDE A 12" WIDE CONCRETE SECTION TO EXTEND A MINIMUM 6" BELOW THE EXISTING ADJACENT GROUND WITH A 45 DEGREE SECTION TO BRING BACK TO THE STANDARD 6" THICKNESS. SPECIFY LOCATIONS FOR USE ON THE PLANS.
4. CROSS SLOPE OF AMENITY AREA PAVEMENTS SHALL BE A MAXIMUM OF 2% UNLESS OTHERWISE APPROVED BY GOCARY.
5. EXTEND AGGREGATE BASE COURSE 12" BEYOND EDGE OF SHELTER PAD IN ALL DIRECTIONS EXCEPT WHERE BORDERED BY EXISTING PAVEMENTS.
6. AGGREGATE BASE COURSE SHALL MEET NCDOT STANDARD SPECIFICATIONS FOR ROADS AND STRUCTURES.
7. SUBGRADE AND AGGREGATE BASE COURSE SHALL BE PROPERLY COMPACTED WITH PLATE TAMPERS PRIOR TO PLACING CONCRETE.
8. TYPICAL SHELTER PAD IS MINIMUM DESIGN STANDARD FOR ALL SHELTERS TO BE INSTALLED FOR ALL GOCARY BUS STOPS. SHELTER PAD DESIGN MAY REQUIRE ADDITIONAL THICKNESS, REINFORCEMENT, OR SUBGRADE BASED ON SHELTER MODEL TO BE INSTALLED. VERIFY REQUIREMENTS WITH THE SHELTER MANUFACTURER.
9. ALL NEW PAVEMENTS SHALL BE FLUSH WITH EXISTING SIDEWALKS AND OTHER PAVEMENTS TO PREVENT TRIPPING HAZARDS AND TO ENSURE THE BUS STOP LANDING MEETS CURRENT ADA REQUIREMENTS.
10. ANY PROPOSED CONCRETE ABUTTING EXISTING CONCRETE IS TO HAVE AN EXPANSION JOINT (SEE DETAIL 3100.08).



EFFECTIVE:07/01/23

TYPICAL BUS STOP - CONCRETE INFRASTRUCTURE

DETAIL No.

3700.04