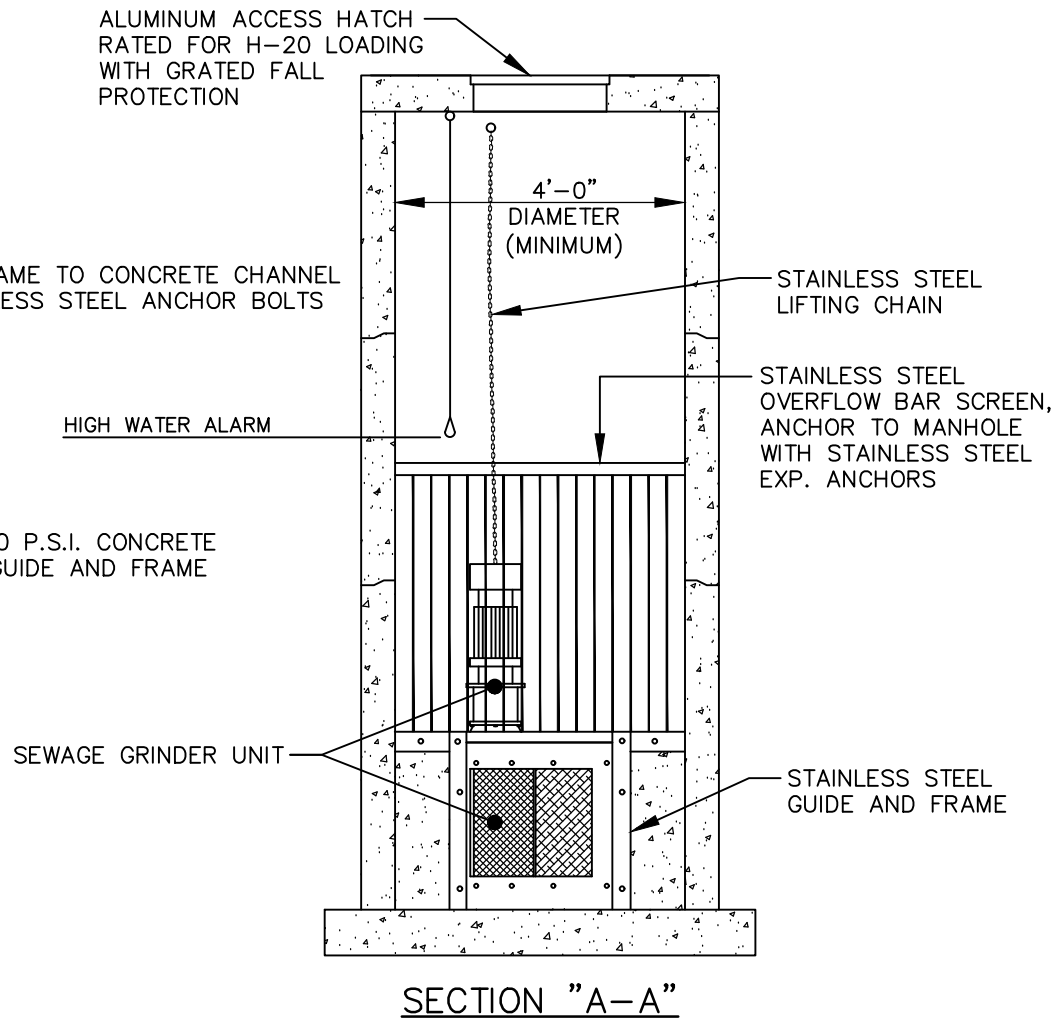


SEE SHEET 2 OF 2 FOR SECTION "B-B"



- NOTES:
1. THERE SHALL ONLY BE A SINGLE INFLUENT LINE INTO THE GRINDER MANHOLE.
 2. GRINDER MANHOLES SHALL BE EPOXY COATED (80 mils) OR APPROVED COMPOSITE STRUCTURES.
 3. ALUMINUM ACCESS HATCH SHALL BE SIZED TO ALLOW INSTALLATION AND REMOVAL OF GRINDER UNIT.



SEWAGE GRINDER UNIT (MANHOLE INSTALLATION)

DETAIL No.

7500.03

SHEET 1 OF 2

EFFECTIVE: 07/01/23