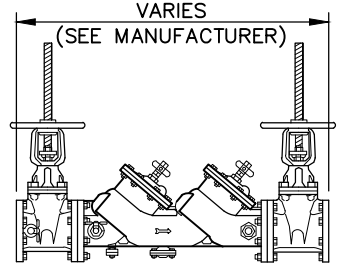
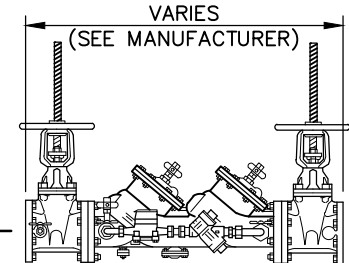


- NOTES:**
1. REDUCED PRESSURE PRINCIPLE BACKFLOW PREVENTION ASSEMBLY SHALL COMPLY WITH ASSE 1013 & AWWA C511.
 2. REDUCED PRESSURE DETECTOR BACKFLOW PREVENTION ASSEMBLY SHALL COMPLY WITH ASSE 1047.
 3. DOUBLE CHECK VALVE BACKFLOW PREVENTION ASSEMBLY SHALL COMPLY WITH ASSE 1015 & AWWA C510.
 4. DOUBLE CHECK DETECTOR BACKFLOW PREVENTION ASSEMBLY SHALL COMPLY WITH ASSE 1048.
 5. BACKFLOW ASSEMBLY SHALL BE CENTERED ON CONCRETE PAD AND CENTERED WITHIN ENCLOSURE.
 6. CLASS 1, ASSE 1060 HEATED AND INSULATED WEATHERPROOF ENCLOSURE REQUIRED.
 7. STANDARD 120V GFCI ELECTRICAL RECEPTACLE TO BE INSTALLED IN ACCORDANCE WITH THE N.C. ELECTRICAL CODE FOR OUTDOOR OPERATION.
 8. PIPE MATERIAL SHALL BE CLASS 350 DIP APPROVED BY CARY.
 9. INSTALLATION SHALL BE IN COMPLIANCE WITH ALL APPLICABLE CARY ORDINANCES AND SPECIFICATIONS IN ADDITION TO THE N.C. PLUMBING CODE.
 10. PROPERTY OWNER SHALL BE RESPONSIBLE FOR MAINTENANCE AND OPERATION OF BACKFLOW ASSEMBLY AND COMPLIANCE WITH REPORTING AND TESTING REQUIREMENTS.
 11. ALL 'NO LEAD' BRASS COMPONENTS SHALL MEET UNS C89833 AS PER ASTM B584.

NO LEAD DOUBLE CHECK VALVE BACKFLOW PREVENTION ASSEMBLY VARIES (SEE MANUFACTURER)

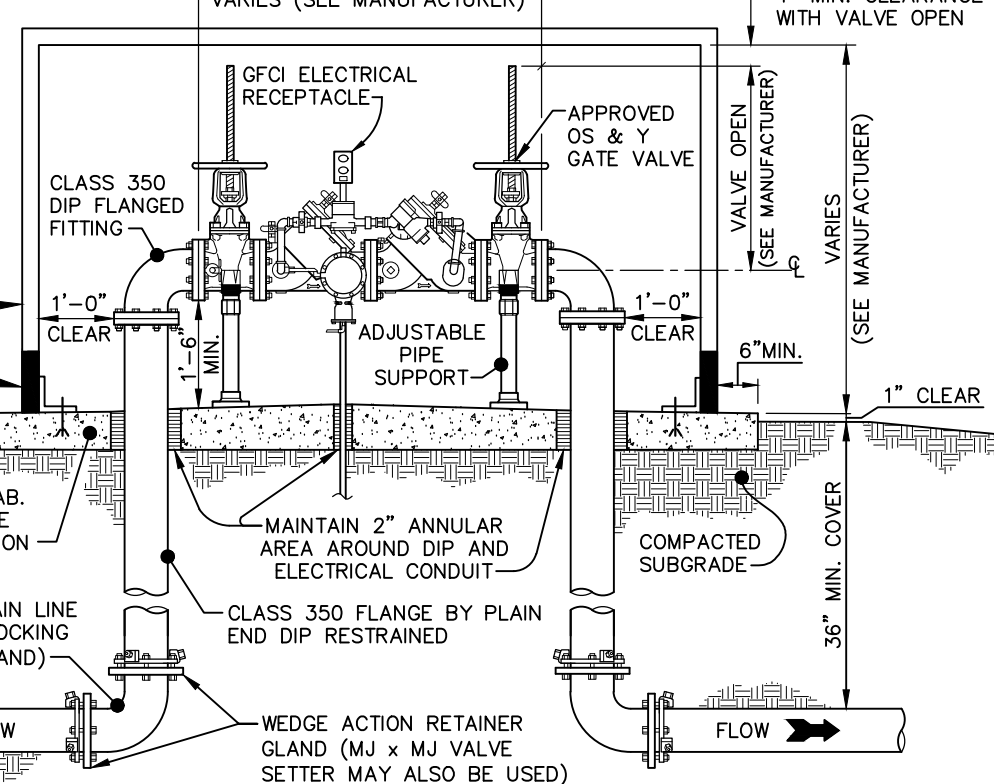


NO LEAD DOUBLE CHECK DETECTOR BACKFLOW PREVENTION ASSEMBLY VARIES (SEE MANUFACTURER)



OR

NO LEAD REDUCED PRESSURE DETECTOR BACKFLOW PREVENTION ASSEMBLY VARIES (SEE MANUFACTURER)



CLASS 1, ASSE 1060 HEATED & INSULATED WEATHERPROOF ENCLOSURE ANCHORED TO CONCRETE PAD

IF RPZ, PROVIDE DRAIN PORT FOR POSITIVE DRAINAGE OUT OF ENCLOSURE (MINIMUM TWICE THE SIZE OF RPZ)

6" 3000 PSI CONCRETE SLAB. DIMENSIONS PER ENCLOSURE MANUFACTURER SPECIFICATION

MAINTAIN 2" ANNULAR AREA AROUND DIP AND ELECTRICAL CONDUIT

COMPACTED SUBGRADE

DIP, MJ FITTING (ROD BACK TO MAIN LINE VALVE AND PROVIDE REACTION BLOCKING OR INSTALL LOCKING RETAINER GLAND)

CLASS 350 FLANGE BY PLAIN END DIP RESTRAINED

APPROVED CLASS 350 DIP, RESTRAINED OR RODDED TO MAIN LINE VALVE

FLOW

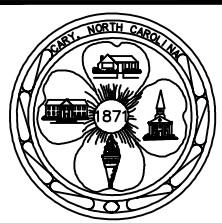
WEDGE ACTION RETAINER GLAND (MJ x MJ VALVE SETTER MAY ALSO BE USED)

FLOW

STANDARD COMMERCIAL OUTDOOR BACKFLOW ASSEMBLY, (2 1/2" DIAMETER AND LARGER)

DETAIL No.

6200.05



EFFECTIVE: 07/01/24