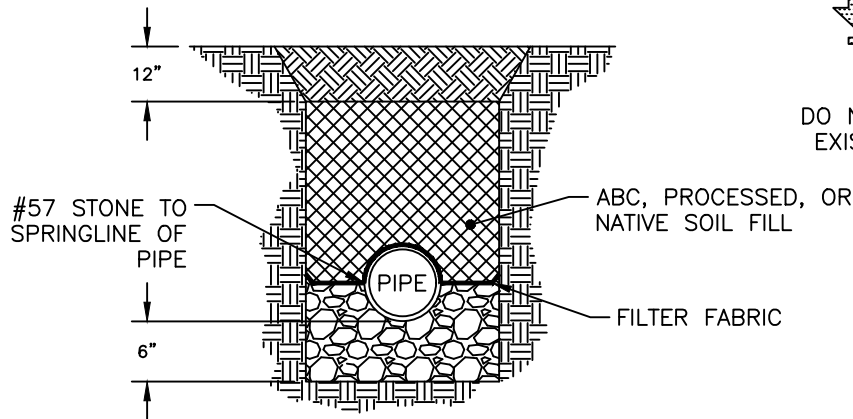
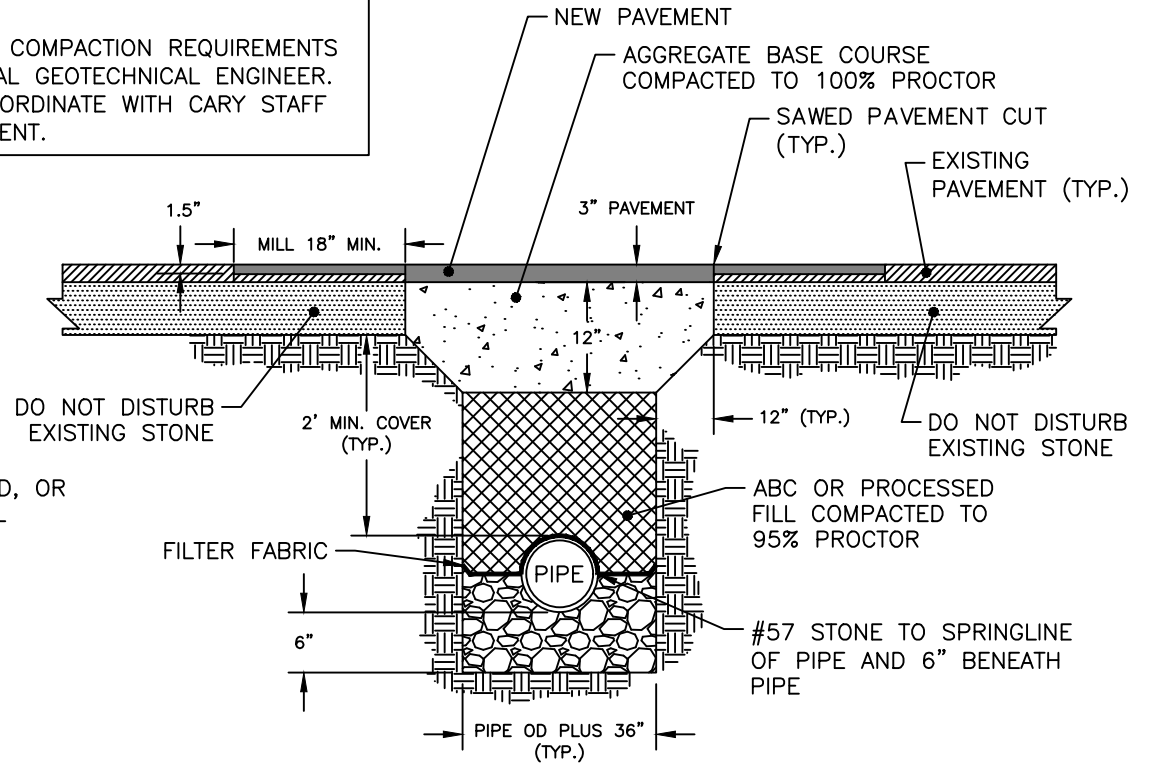


NOTES:

1. PIPE SHALL BE BEDDED IN NO. 57 STONE TO CENTER OF PIPE AND EXTEND 6 INCHES BELOW THE PIPE.
2. FILTER FABRIC SHALL BE PLACED AS SHOWN IN DETAILS BELOW.
3. FOR NATURAL GROUND INSTALLATION SITE SOILS MAY BE USED AT THE DIRECTION OF A LICENSED PROFESSIONAL GEOTECHNICAL ENGINEER.
4. THE CONTRACTOR SHALL BE RESPONSIBLE FOR VERIFYING COMPACTION REQUIREMENTS BY SOILS TESTING CERTIFIED BY A LICENSED PROFESSIONAL GEOTECHNICAL ENGINEER.
5. WHEN PAVEMENT THICKNESS IS LESS THAN 3 INCHES, COORDINATE WITH CARY STAFF ON METHOD OF TRANSITIONING FROM OLD TO NEW PAVEMENT.



NATURAL GROUND



ASPHALT PAVEMENT

NOTE: DO NOT USE FOR STORMWATER CONTROL MEASURES (SCM) AND/OR DAM OUTLET STRUCTURES.



NTS

STANDARD STORMWATER TRENCH INSTALLATIONS

EFFECTIVE: 07/01/24

DETAIL No.

8000.10