

GLOW // ARCHIVES

LEVR Studios & Rhett Hissam:
Recurrent Change
GLOW 2024
Projection Installation

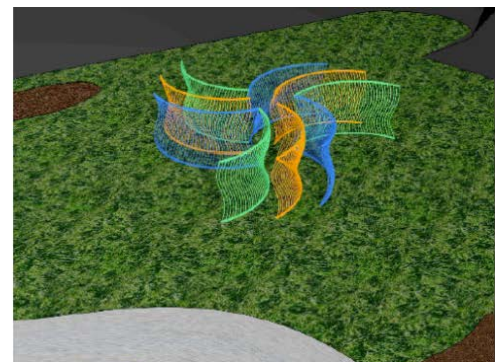
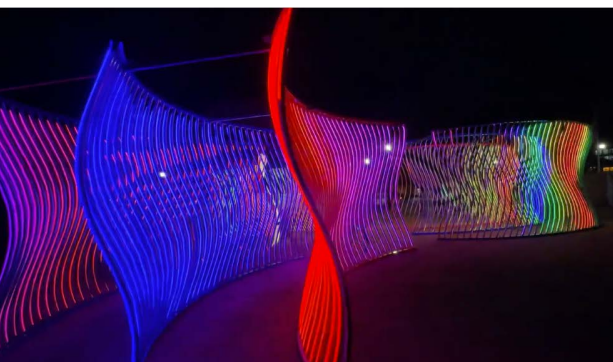
An cyclical animated display inspired by the blooms and symbolic associations of flowers to the seasons. Based on observation and folklore, each type of plant featured in the collection is intended to capture the essence of each month of the year. Showcased at the start of the new year - it offers space for reflection of the years past & facilitates excitement for the month and seasons to come.



Matt McConnell:
Evolution Field III
GLOW 2024
Light Sculpture

McConnell Studios installed a new triple wave version titled 'Evolution Field III' for the GLOW 2024 festival in Cary, NC at the Old Library Site. Basic layout of three sets of elements around 45 feet in diameter.

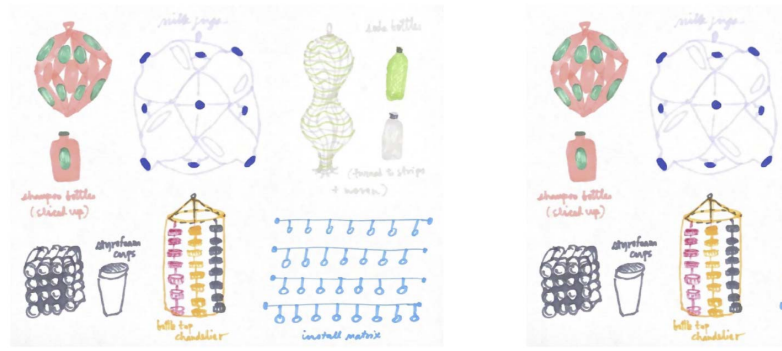
Evolution Field is a triple layer moiré wall that blends color and light in visual waves reminiscent of galaxy forms. The slightest change in perspective creates an evolution in form, which will be seen from great distances, especially at night. The three layers create valleys that participants can walk through, shifting focus from layers to an internal landscape. Motion sensors set at the ends, and in other locations, will act as gateways, activating waves of complimentary colors through the more stable slow evolution of color in fiber optic systems lining every vertical element. The work is meant to reflect on the complexity of layering energy and relationships, which shifts with only the slightest change.



GLOW // ARCHIVES

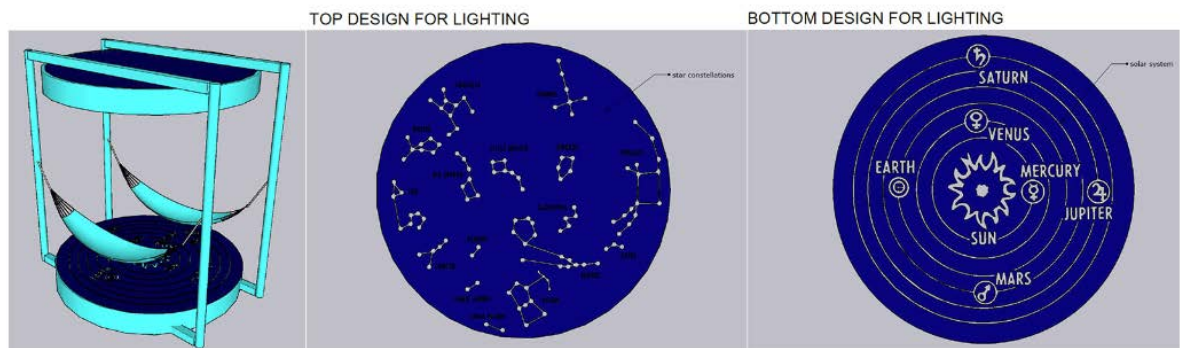
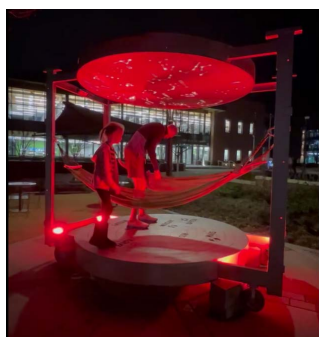
Julia Gartell + Bec Conrad
GLOW 2024
Light Sculpture

The suspended light sculpture is comprised of a series of 100 hand-fabricated hanging lanterns pulsing in programmed colored light sequences. The lanterns will be handmade from recycled materials that convey light in elegant ways, fabricated with careful and creative attention to their design properties. The plan involves creating 10-20 of each lantern design, building a matrix of evolving shapes that mimic one another but transform in form and material. The lanterns will be suspended above head height, and the shape and infrastructure of the site will determine the final configuration. The lights will be invisibly suspended within the forms, and by dark they will create magical patterns. Lead artist Julia Gartell is dedicated to creating work that is accessible and also helps viewers consider materials in a new way. With this project, she aims to repurpose familiar plastics such as milk cartons, shampoo bottles, and other consumables. The base materials will be recognizable but utterly transformed and transfixing



Erik Beerbower: Constellations
GLOW 2024
Light Sculpture

Light pollution is defined as: brightening of the night sky caused by street lights and other manmade sources, which has a disruptive effect on natural cycles and inhibits the observation of stars and planets. Because light pollution has turned our gaze away from the stars, I wanted to remind people that there is a vast solar system and constellations above our heads. when we lay on our backs we tend to look up. This interactive sculpture allows participants to lay in the hammock and look up at a star map showing the names and placements of the constellations in the sky. Looking down participants can see a map of our solar system and where we are in relation to the sun. My goal is to remind people that there is a vast universe out there and that once upon a time human beings looked towards the heavens a lot longer than they stared at their phones.



GLOW // ARCHIVES

Robin Vuchnich & Xo Immersive GLOW 2024 Light Installation

The installation features light art created by New Media Artist, Robin Vuchnich. Via video-mapping techniques, the artwork will appear to conform to the natural details of the park and will animate into different designs, inspiring wonder, curiosity, and attention to the park as an exciting canvas for a public art activation, entertainment, and play. By leveraging cutting-edge projection mapping techniques, the tree (or splash area) will transform with projected art and a variety of animations — glimmering in the night as though bio-luminescent — creating a fantasy-like visually enchanting and naturally immersive experience for visitor's to enjoy. We are excited to collaborate closely with the City of Cary to bring this project to life, helping to foster a strong connection between the newly developed and vibrant natural space of the park, and the community it hopes to host and inspire.



Max Dowdle: Glowfort 1 GLOW 2022 Light Sculpture

"Glowfort 1 captures the whimsy of childhood, and the wonder of dreams. Glowfort 1 is a breathtaking and interactive installation that promises to amaze visitors. This artwork is designed to delight visitors by offering a unique, immersive experience that encourages interaction and exploration. The installation is built to withstand the test of time and any extensive interaction it may receive from visitors. The installation is highly interactive, encouraging visitors to explore the structure and engage with the various elements that make it up, including lights, form, and space. Overall, this artwork is sure to captivate and inspire visitors, making their time in Cary a truly unforgettable experience."



GLOW // ARCHIVES

LEVR Studios & Rhett Hissam:
Threshold
GLOW 2023

Interactive Augmented Reality Sculpture

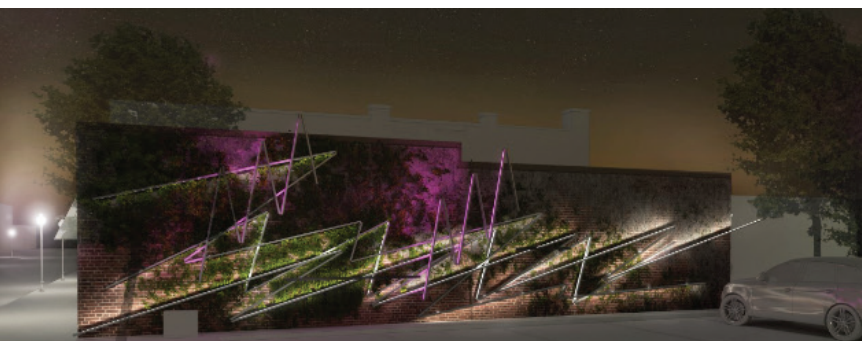
"An interactive sculpture inspired by folklore, symbology, and the healing properties of plants. The triangular structure depicts three flowering plant species along with the messages of love, intention, and joy that they carry. The illuminated doorways represent the threshold between the natural/spiritual worlds and the points of connection between the two. The imagery was created using VR technology and 3D modeling software. Find the QR codes hidden inside the piece to activate an augmented reality filter on your phone!



Kurt West
Heartbeat
GLOW 2023
Light Sculpture

"Let's go downtown" is a phrase that evokes excitement and connection with the community. A place of activity and entertainment, the downtown area of Cary, NC, brightens the town and infuses it with life. What could be more evocative of this energy than a heartbeat? The proposed light installation on the wall at 108 E. Chatham St. embodies that heartbeat with a light sculpture inspired by the visual rendition of a heartbeat on a monitor, pulsing to the rhythm of downtown.

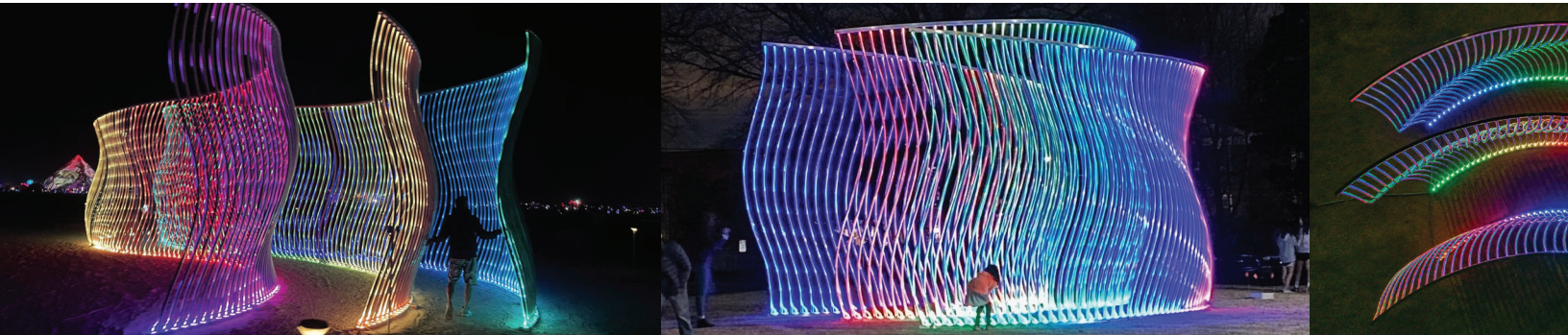
Hanging from a parapet wall cap, the Heartbeat installation consists of a cascade of linear, light gauge steel studs, traveling down the wall from left to right as a relief wall sculpture. LED lights are concealed within the flanges of the steel studs, throwing light off the brick wall and other steel members. The lighting pulses along the installation: white light at a faster pace engages the eye and elevates excitement, while pink light manifests at an intermittent, steady beat. Following the trajectory of the light along the various lines is a mesmerizing experience that invites the viewer to engage with the installation.



GLOW // ARCHIVES

Matt McConnell: Evolution Field
GLOW 2022 & 2023
Light Sculpture

Evolution Field is a triple layer moiré wall that blends color and light in visual waves reminiscent of galaxy forms. The slightest change in perspective creates an evolution in form, which will be seen from great distances, especially at night. The three layers create valleys that participants can walk through, shifting focus from layers to an internal landscape. Motion sensors set at the ends, and in other locations, will act as gateways, activating waves of complimentary colors through the more stable slow evolution of color in fiber optic systems lining every vertical element. The work is meant to reflect on the complexity of layering energy and relationships, which shifts with only the slightest change.



Britt Flood: Your Halo is Showing
GLOW 2022
Light Murals

A whimsical, colorful work of art that will hint at "abstract portraits, hands, and flower features," artist Britt Flood's goal with this GLOW installation is to "invoke butterflies in all those who walk by. A glimmer of glee, giddiness, and excitement upon seeing the piece, just like those magic moments you feel butterflies when making a new friend, kissing someone you love, or finally feeling self love and acceptance. My hope would be for everyone to walk by this piece and forget about the world around us, even if just for a moment, and have a feeling of awe and wonder within themselves, and ultimately to take that feeling and illuminate those around us, essentially sharing our inner light with one another.



GLOW // ARCHIVES

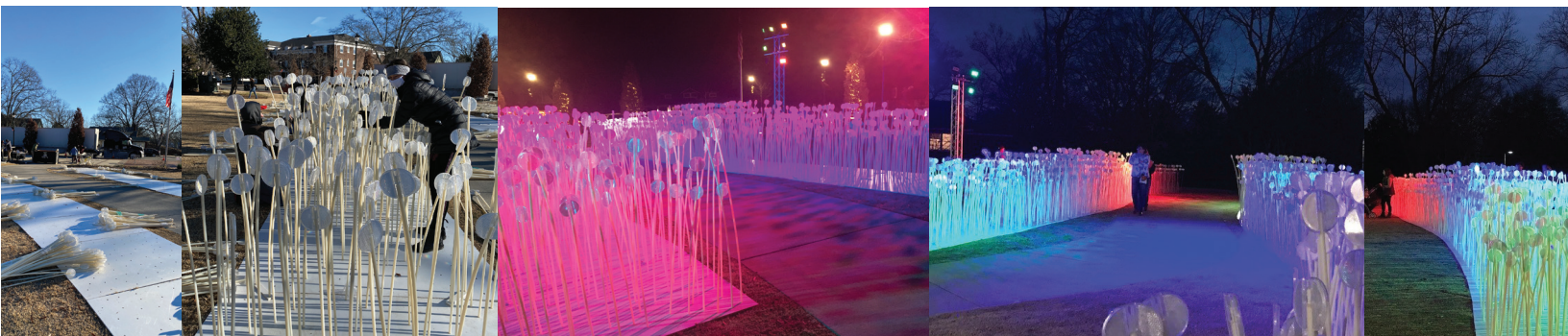
When we see this work, evocative of a rural wheat field swaying in the breeze, we get a little taste of the distant summer even as winter dawns. Fluttering atop thousands of flexible stems that bend in the winter wind, white reflectors scatter light from the projectors in Place des Festivals. Right in the heart of the city, these stylised stalks of wheat dance and shimmer, inviting passers-by to enjoy a dreamy stroll among them. Entre les rangs / City field was first presented as part of the 4th edition of Luminothérapie, in 2013-2014, at the Place des Festivals in the Quartier des Spectacles in Montreal.

ENTRE LES RANGS / CITY FIELD
GLOW 2022
Light Sculpture

THE CREATORS

A work by Kanva Architecture in collaboration with Udo Design, Côté Jardin, Boris Dempsey and Pierre Fournier.

CREOS a leading agency of public art interactive installations in urban spaces, connects creators, and presenters of public art around the world. Cary worked closely with CREOS and a team of 30 local volunteers for over a day to install ENTRE LES RANGS at the old library site along Academy Street.



LEVR Studios & Rhett Hissam: Nourish
GLOW 2022
Dynamic VR Mural

"Selected plants representative of a category of herbal medicines known as nervines. Nervines are herbs that directly effect our nervous system. Our nervous system regulates our response to stimuli. How our body responds to stressors can effect all aspects of our physical and mental health. By tuning into our energy levels and state of mind, our nervous system can tell us what aspects we need to bring balance to. Whether you are overactive or depleted, there are plant medicines to aid in recalibration."



GLOW // ARCHIVES

Mike Cuales & Rhett Hissam:
Unseen Nature
GLOW 2021
Light Sculpture

An animated journey into an energetic realm of flowers found in North Carolina. Hand painted in Virtual Reality with an accompanying soundtrack by Donovan Moran available at: rhettthis-sam.me/uneen. Since the beginning, plants have been here to aid us. If we take the time to be still, listen, and see with all of our senses, we too can access this knowing. This story invites you to take a moment and view the often overlooked yet boundless beauty of our surroundings.



Pat Fitzgerald: Bolt
GLOW 2021
Light Sculpture

"The idea behind the "Bolt" neon sculpture is threefold.

1. Vigilance! "Bolt" is a reminder that we are not out of the pandemic yet, and the sculpture is a sort of artistic public service announcement for the community to remain safe and careful, and vigilant.
2. Like the ancient Greeks, we do not understand the tragedy of why, when and where this virus strikes, it is like a lightning bolt from the sky.
3. Finally, the virus itself is visualized, making this microscopic phenomenon larger than life. In this way, people might be reminded that although we cannot see COVID, it is still a powerful and dangerous presence in our community".

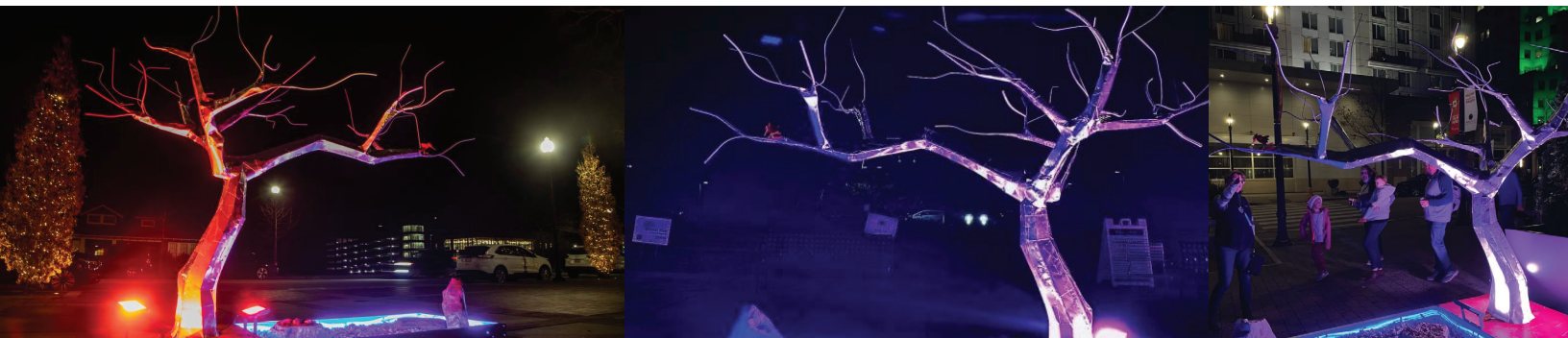


GLOW // ARCHIVES

Erik Beerbower: Bonsai Tree
GLOW 2021
Metal Sculpture

"The idea for the bonsai tree sculpture was inspired by the simplicity of Japanese design. I have always been drawn to Zen gardens, the Buddhist monks that created them in ancient Japan had a great love and appreciation for their surroundings. The tree is a symbol of life, the white gravel represents the ocean, the bird is nature, and the stones reflect the mountains and islands that surrendered them. For me, this sculpture symbolizes mindfulness, remembering to appreciate my surroundings and being thankful for all that I have around me. Zen has a balance between the yin and the yang, this sculpture has a balance as well; day and night. During the day it is tranquil and meditative, at night it when the lights bounce off the metal it becomes ethereal".

This sculpture is made of hammered steel sheets over rebar armature. The little red bird is made from forks, spoons, and butter knives.



Astro Botanicals & Julia Gartrell:
Botanical Lights
GLOW 2021
Inflatable Sculpture

Botanical Lights is a pop up exhibition of glowing inflatables and tube lights on the grass to brighten up the evening sky through the month of November. Artists Astrobotanicals and Julia Gartrell teamed up together to curate this glowing installation that can be viewed both as a drive-by and walk-through experience. The inflatables are colorful towering structures- some reaching 20 ft high- and resemble flowers but not of this world, leaving viewers to their imaginations and sparking creativity.

