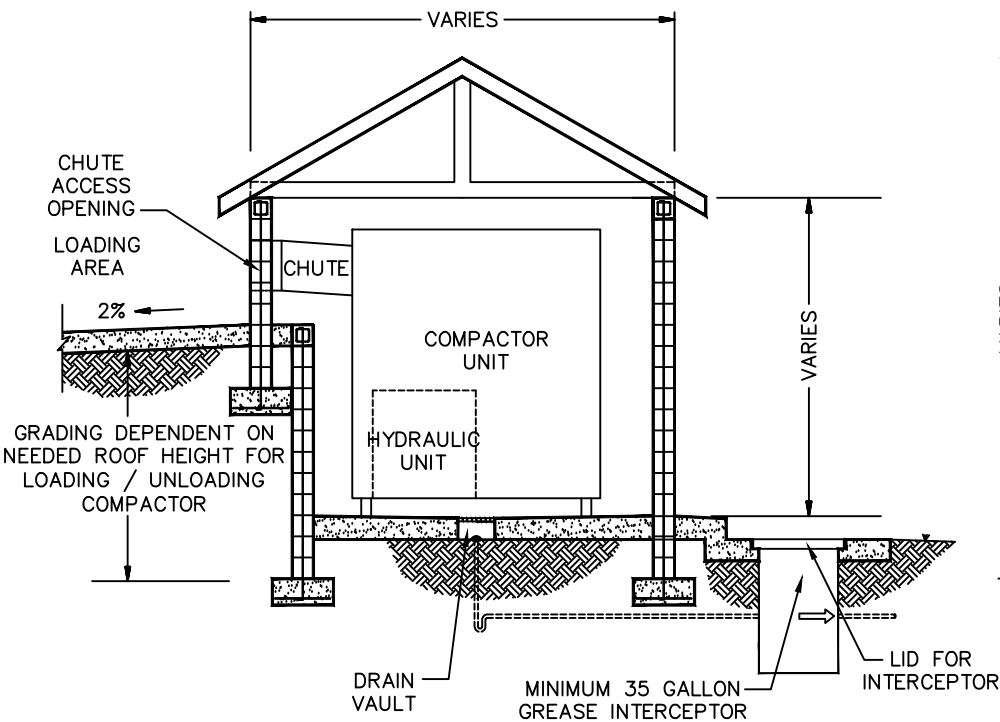
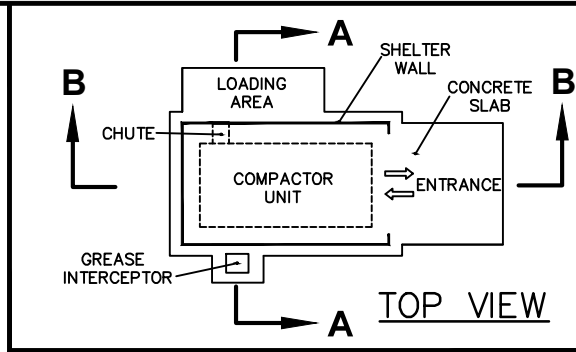


A-A SECTION VIEW



NOTES:

1. THE HYDRAULIC COMPONENTS, EITHER A SELF-CONTAINED OR STAND ALONE UNIT, ARE TO BE MOUNTED ON THE PAD IN ADDITION TO THE COMPACTOR SHELL/BODY.
2. GREASE INTERCEPTOR SHALL BE H-20 BRIDGE LOADED IF SUBJECT TO VEHICULAR TRAFFIC.
3. ROOFING/CURBING/SIDING/GRADING REQUIRED TO PREVENT STORM WATER SHEET FLOW OR BLOW IN FROM ALL SIDES.



B-B SECTION VIEW

