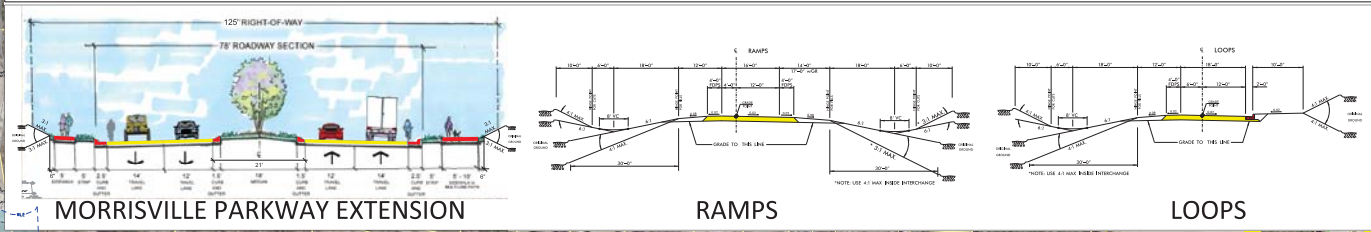


LEGEND

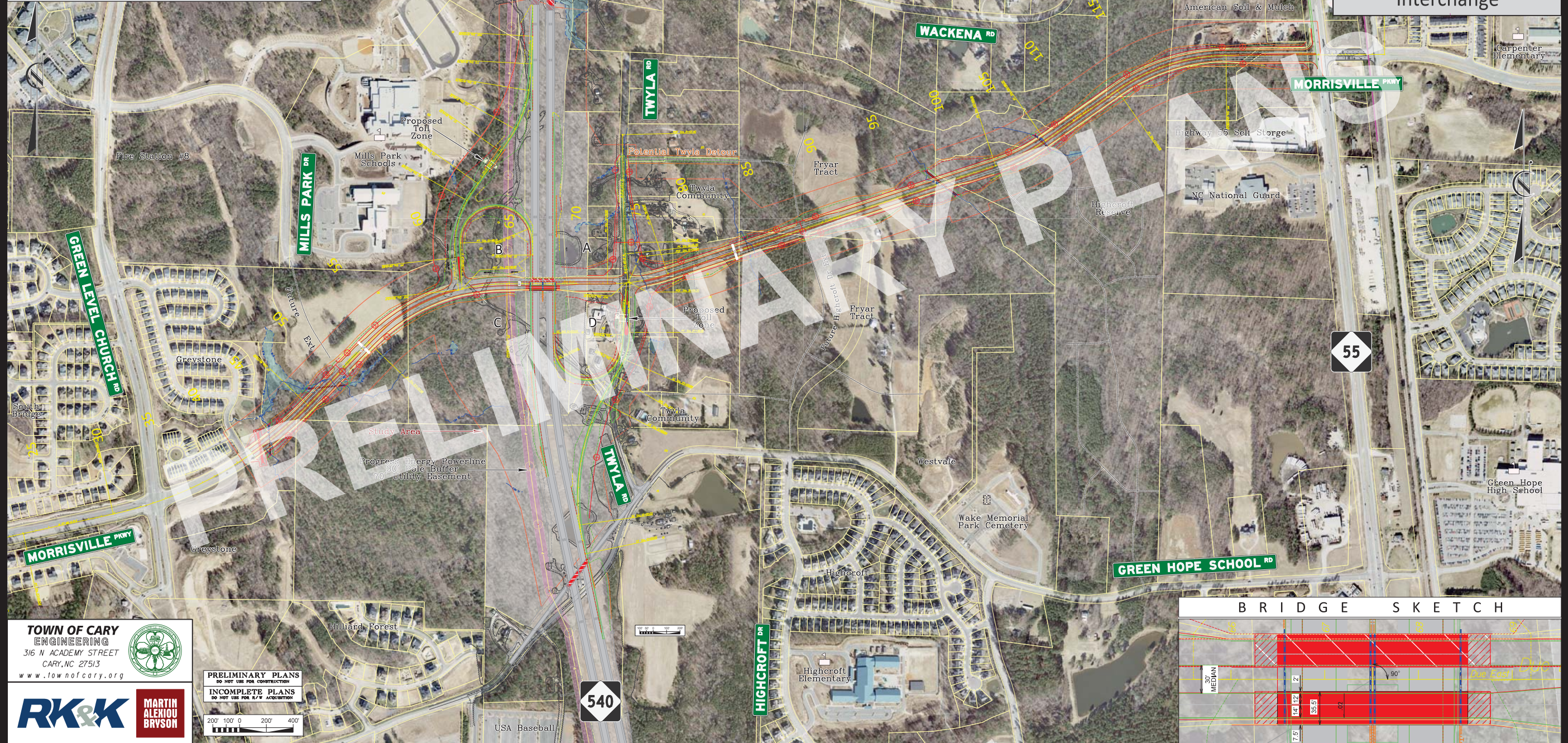
- | | |
|--------------------------|-----------------------|
| Proposed: | Existing: |
| Concrete Islands | NC 540 Roadway |
| EOT w/ Curb-and-Gutter | NC 540 Structures |
| EOT w/ Paved Shoulders | NCTA Properties |
| Lane Lines/Flow Arrows | Right-of-Way, Parcels |
| Sidewalk/Greenway | Power Lines |
| Structures, Box Culverts | Wetlands |
| Limits of Construction | Streams |
| Right-of-Way | Cemeteries |
| Controlled-Access R/W | Schools |
| Construction Easement | |
| Drainage Easement | |

TYPICAL SECTIONS

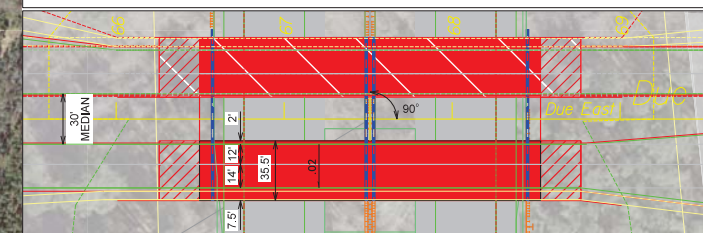


PRELIM. DSN. / COST ESTIMATES

T.I.P. Project U-5315
MORRISVILLE PARKWAY EXTENSION
and NC 540 INTERCHANGE
GREEN LEVEL CHURCH ROAD to NC 55
CARY, NC
ALT. C - Partial Cloverleaf Interchange



BRIDGE SKETCH



TOWN OF CARY ENGINEERING
 316 N ACADEMY STREET
 CARY, NC 27513
 www.townofcary.org

RK&K **MARTIN ALENIO BRYSON**

PRELIMINARY PLANS
 DO NOT USE FOR CONSTRUCTION

INCOMPLETE PLANS
 DO NOT USE FOR R/W ACQUISITION

8/17/2025 - 10:00 AM - R:\Projects\U-5315-Cost\U-5315-Cost.dwg, v01.dwg
 PROJECT: U-5315 - COST ESTIMATES

8/17/2025 - 10:00 AM - R:\Projects\U-5315-Cost\U-5315-Cost.dwg, v01.dwg
 PROJECT: U-5315 - COST ESTIMATES