

Town of Cary Pump Station Inspection Sheet



**Facility Name:** Carystone PS

**Inspection Date:** 9/9/2011

**ID Number:** 020

**Drawdown Date:** 5/27/2010

**Pump**

**Condition:** Good

Type: Submersible

Pump One: 198 gpm

Discharge Diameter: 4"

Pump Two: 191 gpm

Control: Float / FVNR Starter

Firm Capacity: 191 gpm

Motor Horsepower: 10

Design Point (flow): 170 gpm

Pump RPM: 1750

Design Point (pressure): 53 feet of water

Manufacturer: Myers

Rep: Pentair Pump Group

Model: 4VH

704-504-3111

419-289-1144

Wetwell: 6.1' Diameter

8.33 Deep

Vol: 1,800 gal

**Generator: None**

**Grinder: None**

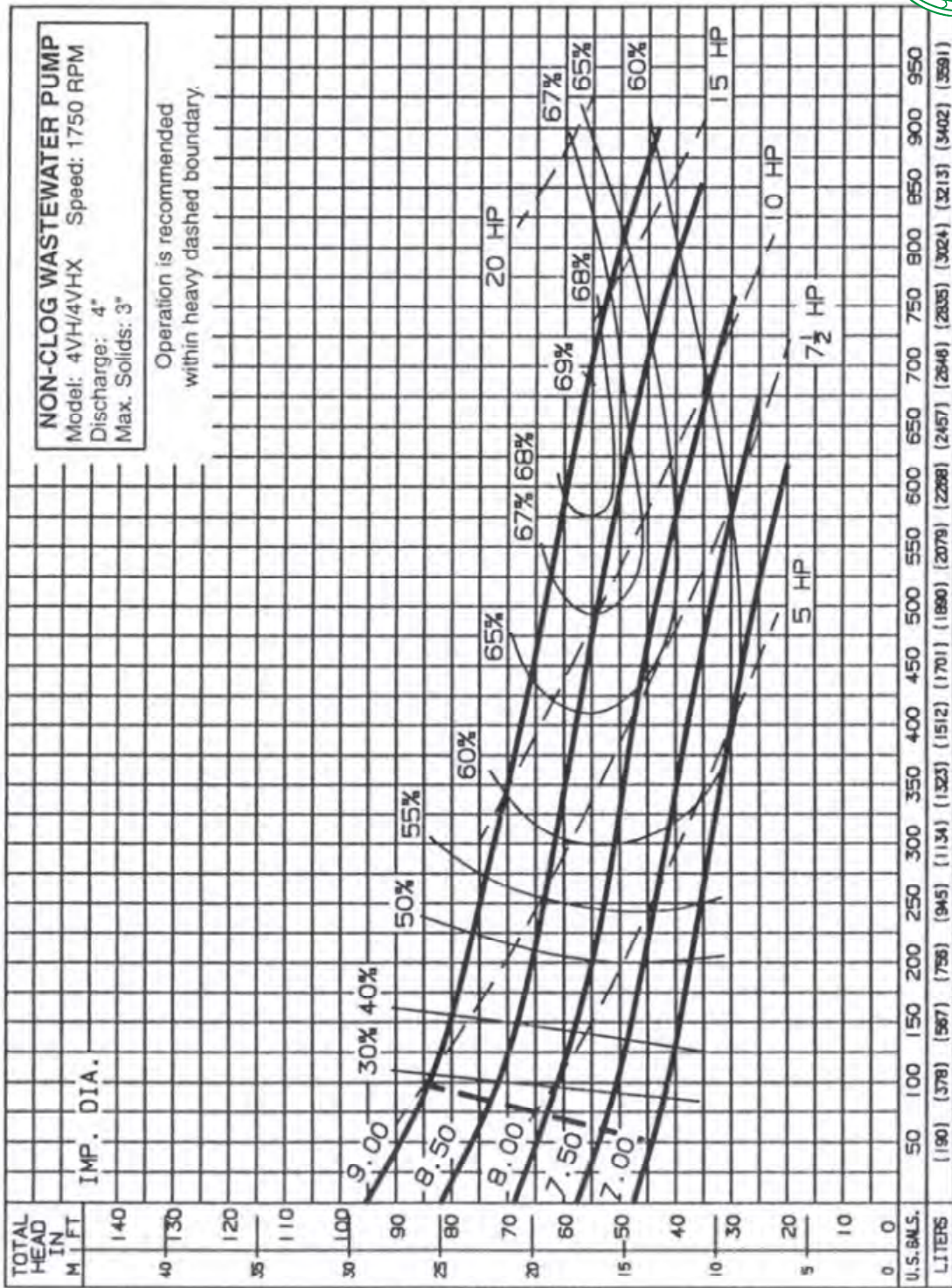
**Comments:**

- 6.1' inside diameter wet well, concrete appears to have a coating
- exposed exterior of wetwell is painted; pump wetwell and valve vault could use repainting
- 6'x8' valve vault; some groundwater at bottom; piping is in poor condition
- aluminum hatches are in good condition
- top metal pump guide supports are corroded significantly at top
- aluminum trash basket and guide in good condition
- drum stand rusting



Carystone PS Pump Curve

Pump Performance



Pump performance is based on clear water (1.0 specific gravity @ 68°F) and pump fluid end (hydraulic) efficiency. Major data based on 40°C ambient temperature.

Town of Cary Pump Station Inspection Sheet



Carystone Pump Station



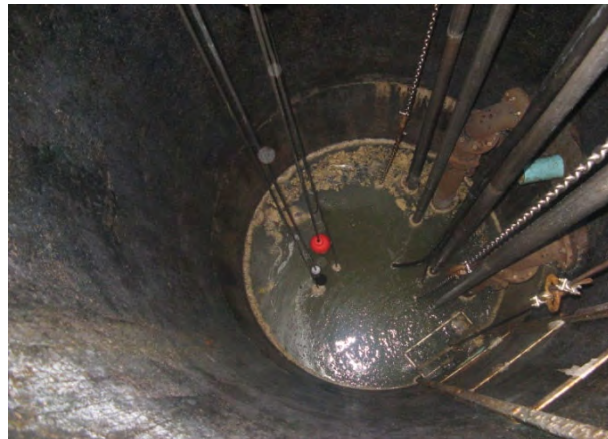
Control Panel



Wetwell



Wetwell



Valves



Wetwell Exterior

