

Town of Cary Pump Station Inspection Sheet



Facility Name: Town Hall Drive PS

Inspection Date: 9/7/2011

ID Number: 023

Drawdown Date: 6/3/2010

Pump

Condition: Good

Type: Submersible

Pump One: 740 gpm

Discharge Diameter: 4"

Pump Two: 723 gpm

Control: Float / FVNR Starter

Firm Capacity: 723 gpm

Motor Horsepower: 15

Design Point (flow): 562 gpm

Pump RPM: 1770

Design Point (pressure): 69 feet of water

Manufacturer: Fairbanks Morse

Rep: HD Supply

Model: D5432MV

828-324-9705

913-371-5000

Wetwell: 6' Diameter 6.5' Deep Vol: 1,400 gal

Generator:

Generator: Caterpillar

Condition: Not running

150 kW

Grinder:

Manufacturer: JWC Environmental

Model Channel Monster

Condition: good

Sound:

At the Fence: 62 dB Gen off

Five foot from Generator 102 db Gen on

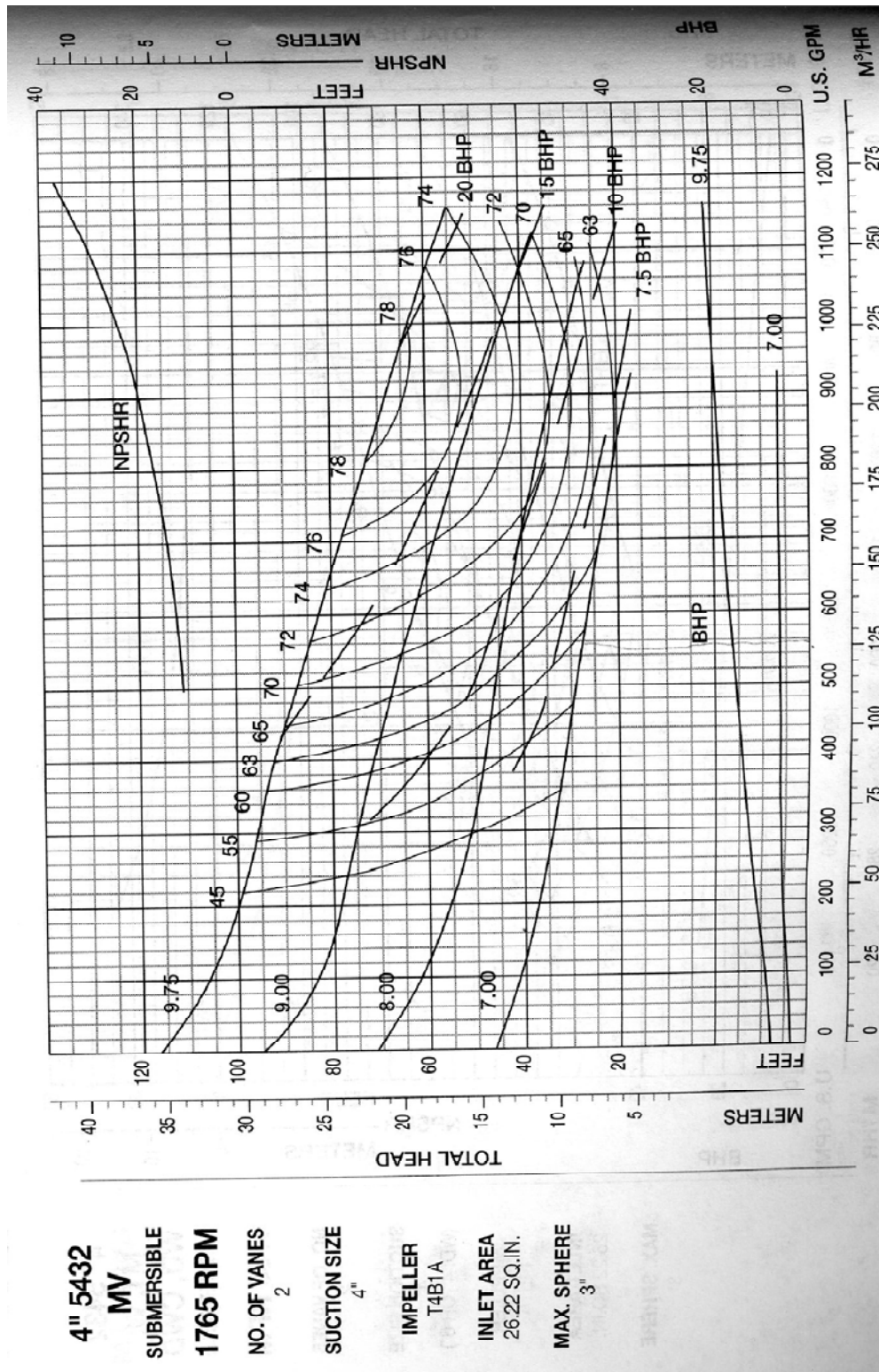
At the Fence: 83 dB Gen on

Comments:

- generator not working
- 6' diameter wetwell, coated; some loss of coating but not significant
- manhole steps appear to be in good condition
- aluminum trash rack is in good condition
- rack guide rails and guide rail top supports have significant corrosion
- pump guides and guide top supports have significant corrosion
- aluminum access hatch has considerable corrosion and the hatch hinges are severely corroded
- 8'x6' CMU valve vault is damp on walls and floor is wet
- aluminum hatch on valve vault is in good condition
- concrete slab on grade is in good condition

Town of Cary Pump Station Inspection Sheet

Town Hall Dr. PS Pump Curve



Town of Cary Pump Station Inspection Sheet



Town Hall Dr Pump Station



Control Panel



Valves



Wetwell



Generator



Chemical Building

