

Town of Cary Pump Station Inspection Sheet



Facility Name: Cary Glen

Inspection Date: 9/7/2011

ID Number: 028

Drawdown Date:

Pump

Condition: Fair

Type: Submersible

Pump One: 579 gpm

Discharge Diameter: 8"

Pump Two: 647 gpm

Control: VFD

Firm Capacity 579 gpm

Motor Horsepower: 128

Rep: HD Supply

Manufacturer: Fairbanks Morse

828-324-9705

Model: DJ5433MV

913-371-5000

Wetwell: 10' Diameter

7.5' Deep

Vol: 5,400 gal

Generator:

Condition: Good

Catapillar

KW: 450

Sound:

At the Fence: 62 dB Gen off

Five foot from Generator 101 db Gen on

At the Fence: 82 dB Gen on

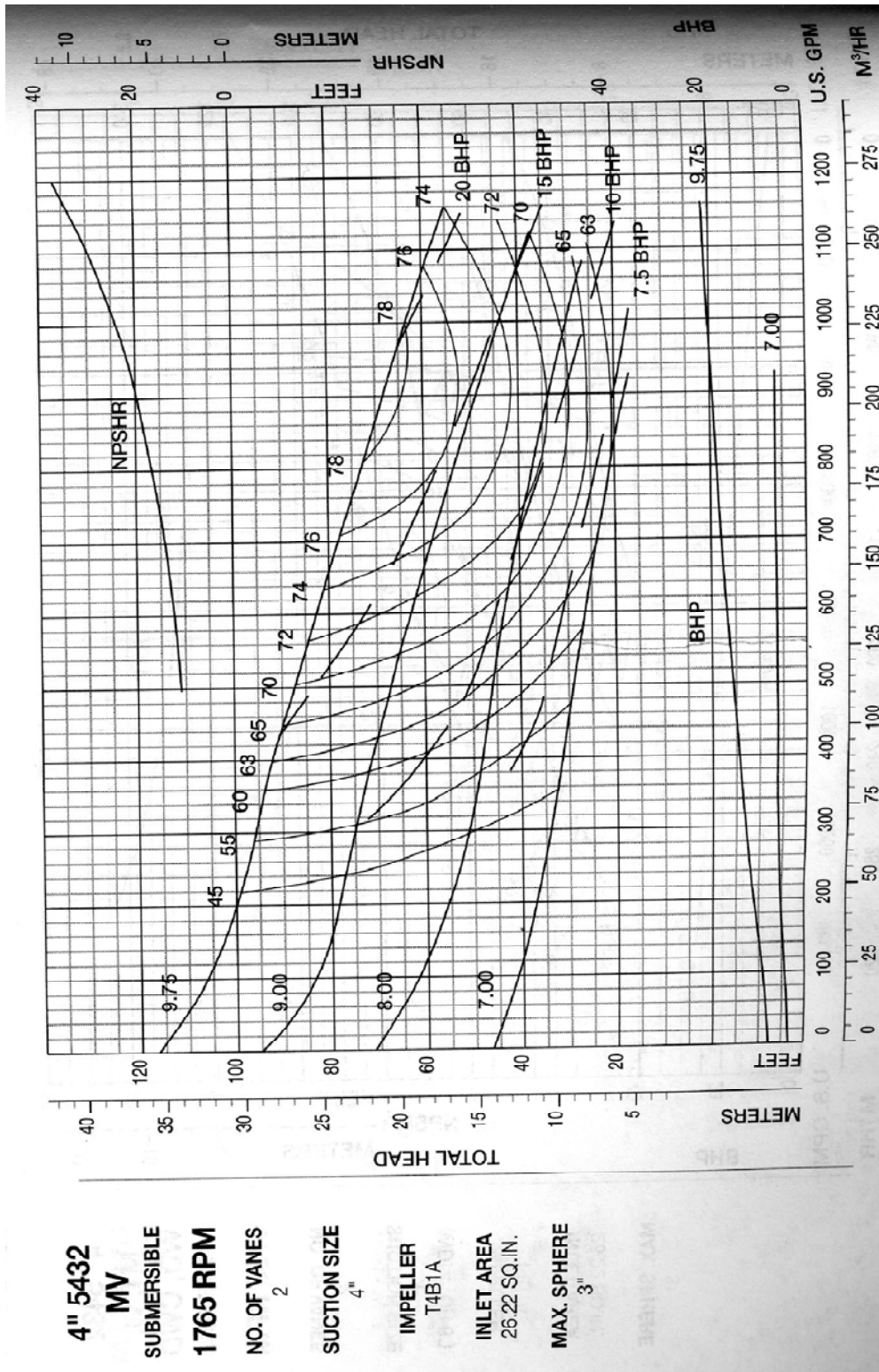
Comments:

- normally bypassed
- outside of building is showing age (cosmetic)
- 10 diameter wetwell coating looks fair.
- valve vault has some groundwater in it
- outside control panels are rusty

Town of Cary Pump Station Inspection Sheet



Cary Glen PS Pump Curves:



Town of Cary Pump Station Inspection Sheet



Cary Glen Pump Station



VFD's



Control Panel



Control Panel



Chemical Room



Generator



Town of Cary Pump Station Inspection Sheet



Control Panel



Grinder Manhole



Wetwell



Wetwell



Diversion Manhole



Valve Vault

